

Residential For Sale

984 Sqft - 335 WHISPERING WILLOW DRIVE,
Santee, California, 92071



Basic Details

Status:	Active
Listing Type:	For Sale
Property Type:	Residential
Property SubType:	Condominium
Price:	\$595,000
Price Per Square Foot:	\$605
Square Footage:	984 Sqft
Year Built:	1995
View:	Mountain(s)
Bedrooms:	2
Bathrooms:	2
Bathrooms (Full):	2
Country:	US
State:	California
County:	San Diego
City:	Santee
Zipcode:	92071
Listing ID:	250036209SD

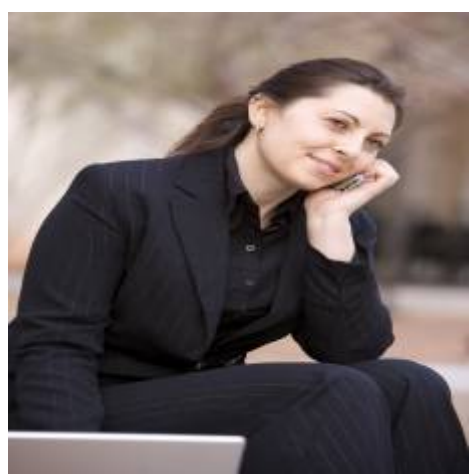
Features

Association:	1
Senior Community:	0
Stories:	2
✓ Pool:	Community
✓ Amenities:	Maintenance Grounds
AttachedGarage :	1
✓ Parking:	2.00
Spa:	1
Entry Level:	1
✓ Laundry:	Gas Dryer Hookup, In Garage
✓ Entry Location	
✓ Spa Construction:	Community
✓ Heating System:	Forced air, See remarks
✓ Cooling System:	Central Air
✓ Utilities:	See Remarks
✓ Water Source:	See Remarks
✓ Appliances:	Dishwasher, Disposal, Gas Range, Refrigerator,

MLS [Addon](#)

Association Fee Frequency:	Monthly
Parcel Number:	3816811317
TaxAnnualAmount:	\$0
Association Fee:	\$383
Garage Spaces:	2
High School:	Arlington
High School 2:	Arling
Middle Or Junior School:	Miller
Levels:	Two
Taxes:	\$0
Guest House SqFt:	0
Approx Lot SqFt:	0

Agent [Info](#)



Rina Maya
📞 858-876-7946
📞 800-878-0907
✉ Questions@unitedbrokersinc.net