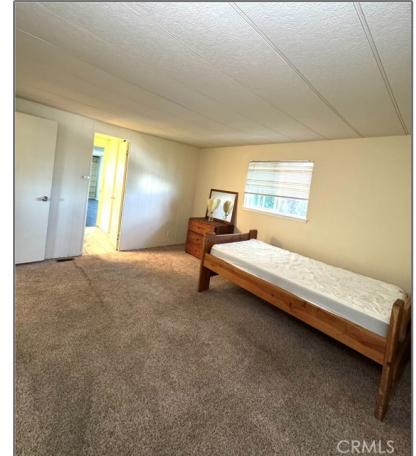


# Manufactured In Park For Sale

1,297 Sqft - 2020 Ashby Road #13, Merced,  
California, 95348



## Basic Details

Status:	Active
Listing Type:	For Sale
Property Type:	Manufactured In Park
Price:	\$74,900
Price Per Square Foot:	\$58
Square Footage:	1,297 Sqft
Year Built:	1970
View:	Mountain(s)
Bedrooms:	2
Bathrooms:	2
Bathrooms (Full):	2
Country:	US
State:	California
County:	Merced
City:	Merced

## Features

Association:	0
Senior Community:	0
Stories:	1
✓ Pet Policy:	Call
✓ Community Features:	Park
✓ Pool:	Community
AttachedGarage :	0
✓ Parking:	2.00
✓ Lot Features:	0-1 Unit/acre
Entry Level:	1
✓ Laundry:	Gas & Electric Dryer Hookup
✓ Entry Location	
✓ Heating System:	Central
✓ Cooling System:	Central Air

Zipcode:	95348	✓ Utilities:	Electricity Available
Listing ID:	MC25185477	✓ Water Source:	Public
		✓ Sewer:	Public Sewer
		✓ Appliances:	Disposal, Gas Oven, Freezer

MLS [Addon](#)

Zoning:	TP
TaxAnnualAmount:	\$0
TaxYear:	0
Garage Spaces:	2
High School:	Arlington
High School 2:	Arling
Middle Or Junior School:	Miller
High School District:	Merced City
Levels:	One
Taxes:	\$0
Guest House SqFt:	0 Sqft
Approx Lot SqFt:	0 Sqft
✓ Special Listing Conditions:	Standard

Agent [Info](#)



Rina Maya  
☎ 858-876-7946  
☎ 800-878-0907  
✉ [Questions@unitedbrokersinc.net](mailto:Questions@unitedbrokersinc.net)

