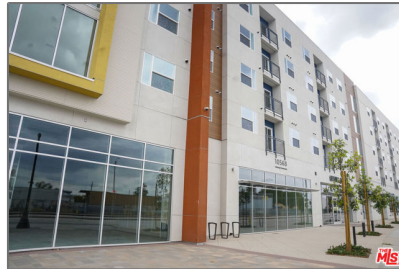


# Residential Rent For Rent

1,048 Sqft - 10568 Promenade Gateway, El Monte,  
California, 91731



## Basic Details

Status:	Active
Listing Type:	For Rent
Property Type:	Residential Rent
Property SubType:	Condominium
Price:	\$3,493
Price Per Square Foot:	\$3
Square Footage:	1,048 Sqft
Lot Area:	2.43 Sqft
Year Built:	2023
View:	Mountain(s)
Bedrooms:	2
Bathrooms:	2
Bathrooms (Full):	2
Country:	US
State:	California
County:	Los Angeles
City:	El Monte
Zipcode:	91731
Listing ID:	25579677

## Features

Association:	0
Senior Community:	0
Stories:	0
✓ Pet Policy:	Call
✓ Pool:	Community
✓ Amenities:	Pool, Clubhouse, Pet Rules, Controlled Access
✓ Parking	
✓ Parking:	Assigned
✓ Furnished:	Unfurnished
✓ Laundry:	Dryer Included, Washer Included
✓ Flooring:	Vinyl
✓ Heating System:	Central
✓ Cooling System:	Central Air
✓ Appliances:	Dishwasher, Microwave, Refrigerator

MLS [Addon](#)

Parcel Number:	8578022004
Lot Size Square Feet:	105,683 Sqft
TaxAnnualAmount:	\$0
High School:	Arlington
High School 2:	Arling
Middle Or Junior School:	Miller
Levels:	One
Lease Term :	12 Months
Taxes:	\$0
Guest House SqFt:	0 Sqft
Approx Lot SqFt:	0 Sqft

Agent [Info](#)



Rina Maya  
 858-876-7946  
 800-878-0907  
 [Questions@unitedbrokersinc.net](mailto:Questions@unitedbrokersinc.net)