

Residential For Sale

1,647 Sqft - 11500 Tennessee Avenue, Los Angeles,
California, 90064



Basic Details

Status:	Active
Listing Type:	For Sale
Property Type:	Residential
Property SubType:	Condominium
Price:	\$1,095,000
Price Per Square Foot:	\$665
Square Footage:	1,647 Sqft
Lot Area:	1.83 Sqft
Year Built:	2009
View:	Mountain(s)
Bedrooms:	1
Bathrooms:	2
Bathrooms (Full):	1
Bathrooms (1/2):	1
Country:	US
State:	California
County:	Los Angeles
City:	Los Angeles

Features

Association:	1
Senior Community:	0
✓ Common Walls:	1 Common Wall
Stories:	0
✓ Amenities:	Spa/hot Tub
✓ Parking:	2.00
✓ Parking:	Garage - Two Door, Guest, Covered, Controlled Entrance, Assigned
Spa:	1
✓ Security:	Card/code access, Carbon monoxide detector(s), Smoke Detector(s), Fire Sprinkler System
Entry Level:	1
✓ Laundry:	Stackable, Dryer Included, Washer Included, In Closet
✓ Room Type:	Loft, Office, Walk-in Closet
✓ Flooring:	Tile, Laminate
✓ Window Features:	Double Pane Windows

Zipcode:	90064	✓	Spa Construction:	Community, Heated, Association
Listing ID:	25575991	✓	Interior Features:	Track Lighting
		✓	Heating System:	Central
		✓	Cooling System:	Central Air
		✓	Water Source:	Public
		✓	Sewer:	Other
		✓	Appliances:	Dishwasher, Disposal, Microwave, Refrigerator, Convection Oven, Gas Cooktop, Range Hood, Oven

MLS Addon

Association Fee Frequency:	Monthly
Zoning:	LAC2
Parcel Number:	4260024013
Lot Size Square Feet:	79,705 Sqft
TaxAnnualAmount:	\$0
Association Fee:	\$628
✓ RoomBathroomFeatures:	Shower, Shower In Tub, Vanity Area, Tile Counters
Garage Spaces:	2
High School:	Arlington
High School 2:	Arling
Middle Or Junior School:	Miller
Levels:	Multi/Split,Two
✓ EatingArea:	Dining Room, Breakfast Counter / Bar
Taxes:	\$0

Guest House
SqFt:

0 Sqft

Approx Lot SqFt:

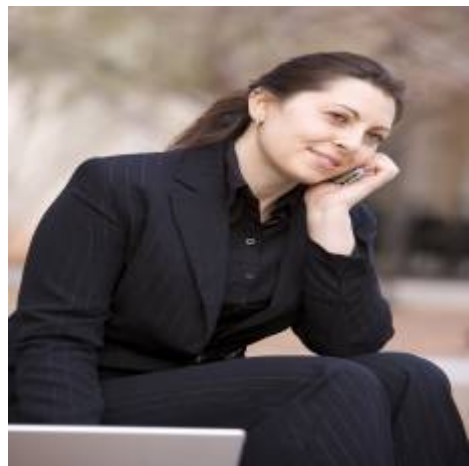
0 Sqft

✓

Special Listing
Conditions:

Standard

Agent [Info](#)



Rina Maya
☎ 858-876-7946
☎ 800-878-0907
✉ Questions@unitedbrokersinc.net

-
