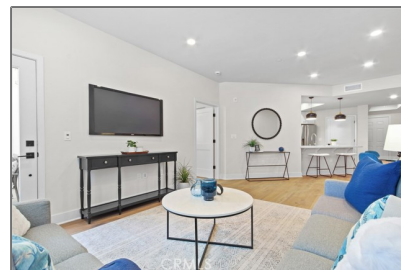
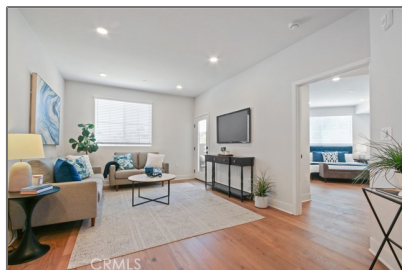


Residential For Sale

1,284 Sqft - 927 Deep Valley Drive, Rolling Hills Estates, California, 90274



Basic Details

| | |
|------------------------|-----------------------|
| Status: | Active |
| Listing Type: | For Sale |
| Property Type: | Residential |
| Property SubType: | Condominium |
| Price: | \$939,900 |
| Price Per Square Foot: | \$732 |
| Square Footage: | 1,284 Sqft |
| Lot Area: | 3.42 Sqft |
| Year Built: | 2025 |
| View: | Mountain(s) |
| Bedrooms: | 2 |
| Bathrooms: | 2 |
| Bathrooms (Full): | 2 |
| Country: | US |
| State: | California |
| County: | Los Angeles |
| City: | Rolling Hills Estates |
| Zipcode: | 90274 |

Features

| | |
|-----------------------|--|
| Association: | 1 |
| Senior Community: | 0 |
| ✓ Common Walls: | 2+ Common Walls |
| Stories: | 5 |
| ✓ Community Features: | Street Lights, Suburban |
| ✓ Amenities: | Meeting Room, Barbecue, Fire Pit, Gym/ex Room, Billiard Room, Recreation Room, Controlled Access, Trash, Sewer, Water, Storage |
| AttachedGarage : | 0 |
| ✓ Parking: | 2.00 |
| Entry Level: | 1 |
| ✓ Laundry: | Dryer Included, Washer Included |
| ✓ Room Type: | Walk-in Closet, Kitchen, Primary Bathroom, Primary Bedroom |
| ✓ Entry Location: | First Floor |
| ✓ Interior Features: | Recessed Lighting, Balcony, Quartz Counters |
| Main Level | 2 |

| | | | |
|-------------|------------|----------------------|--|
| Listing ID: | SB25183991 | Bathrooms: | |
| | | Main Level Bedrooms: | 2 |
| | | ✓ Heating System: | Central |
| | | ✓ Cooling System: | Central Air |
| | | ✓ Water Source: | Public |
| | | ✓ Sewer: | Public Sewer |
| | | ✓ Appliances: | Dishwasher, Gas Range, Microwave, Refrigerator, Gas Oven, Water Heater |

MLS [Addon](#)

| | |
|----------------------------|---|
| Association Fee Frequency: | Monthly |
| Parcel Number: | 7589003017 |
| Lot Size Square Feet: | 148,993 Sqft |
| TaxAnnualAmount: | \$0 |
| Association Fee: | \$788 |
| ✓ RoomBathroomFeatures: | Bathtub, Walk-in Shower, Double Sinks In Primary Bath |
| Garage Spaces: | 2 |
| High School: | Arlington |
| High School 2: | Arling |
| Middle Or Junior School: | Miller |
| High School District: | Palos Verdes Peninsula Unified |
| Levels: | One |
| ✓ EatingArea: | In Kitchen, Breakfast Counter / Bar |
| Taxes: | \$0 |
| Guest House SqFt: | 0 Sqft |

Approx Lot SqFt:

0 Sqft

✓

Special Listing
Conditions:

Standard

Agent [Info](#)



Rina Maya
 858-876-7946
 800-878-0907
 Questions@unitedbrokersinc.net

-
