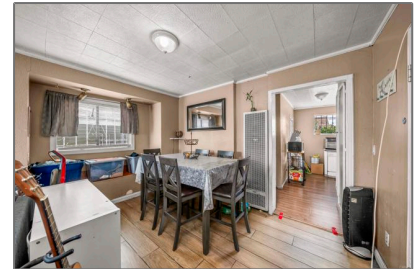


# Residential For Sale

616 Sqft - 1728 VestaStreet, Logan Heights,  
California, 92113



## Basic [Details](#)

|                        |                                |
|------------------------|--------------------------------|
| Status:                | <b>Active</b>                  |
| Listing Type:          | <b>For Sale</b>                |
| Property Type:         | <b>Residential</b>             |
| Property SubType:      | <b>Single Family Residence</b> |
| Price:                 | <b>\$560,000</b>               |
| Price Per Square Foot: | <b>\$909</b>                   |
| Square Footage:        | <b>616 Sqft</b>                |
| Lot Area:              | <b>0.06 Sqft</b>               |
| Year Built:            | <b>1975</b>                    |
| View:                  | <b>Mountain(s)</b>             |
| Bedrooms:              | <b>2</b>                       |
| Bathrooms:             | <b>1</b>                       |
| Bathrooms (Full):      | <b>1</b>                       |
| Country:               | <b>US</b>                      |
| State:                 | <b>California</b>              |
| County:                | <b>San Diego</b>               |
| City:                  | <b>Logan Heights</b>           |
| Zipcode:               | <b>92113</b>                   |
| Listing ID:            | <b>PTP2506265</b>              |

## Features

|                       |                                      |
|-----------------------|--------------------------------------|
| Association:          | <b>0</b>                             |
| Senior Community:     | <b>0</b>                             |
| ✓ Common Walls:       | <a href="#">No Common Walls</a>      |
| Stories:              | <b>1</b>                             |
| ✓ Community Features: | <a href="#">Sidewalks, Curbs</a>     |
| AttachedGarage :      | <b>0</b>                             |
| ✓ Parking             |                                      |
| Spa:                  | <b>0</b>                             |
| ✓ Lot Features:       | <a href="#">0-1 Unit/acre</a>        |
| Entry Level:          | <b>1</b>                             |
| ✓ Laundry:            | <a href="#">Inside</a>               |
| ✓ Room Type:          | <a href="#">Living Room, Kitchen</a> |
| ✓ Entry Location:     | <a href="#">Front Door</a>           |
| ✓ Sewer:              | <a href="#">Public Sewer</a>         |

## MLS [Addon](#)

Zoning: **R-1**

Parcel Number: **5506401600**

Lot Size Square Feet: **2,675 Sqft**

TaxAnnualAmount: **\$0**

Garage Spaces: **1**

High School: **Arlington**

High School 2: **Arling**

Middle Or Junior School: **Miller**

High School District: **San Diego Unified**

Levels: **One**

Lease Term : **12 Months**

Taxes: **\$0**

Guest House SqFt: **0 Sqft**

Approx Lot SqFt: **0 Sqft**

☒ Special Listing Conditions: [Standard](#)

Virtual Tour URL Unbranded: [Click Here](#)

## Agent [Info](#)



Rina Maya

📞 858-876-7946

📞 800-878-0907

✉️ [Questions@unitedbrokersinc.net](mailto:Questions@unitedbrokersinc.net)

