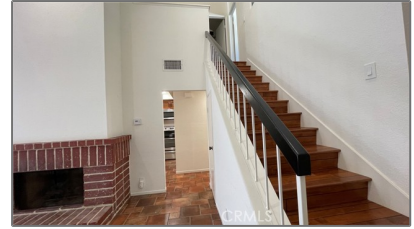


Residential Rent For Rent

1,186 Sqft - 809 CreeksideDrive, Fullerton,
California, 92833



Basic Details

Status:	Active
Listing Type:	For Rent
Property Type:	Residential Rent
Property SubType:	Condominium
Price:	\$3,500
Price Per Square Foot:	\$3
Square Footage:	1,186 Sqft
Lot Area:	5.48 Sqft
Year Built:	1978
View:	Mountain(s)
Bedrooms:	2
Bathrooms:	3
Bathrooms (Full):	2
Bathrooms (1/2):	1
Country:	US
State:	California
County:	Orange
City:	Fullerton

Features

✓ View:	Neighborhood
Association:	1
Senior Community:	0
✓ Common Walls:	2+ Common Walls
Stories:	2
✓ Community Features:	Sidewalks, Street Lights, Hiking
✓ Pool:	Association
AttachedGarage :	1
✓ Parking:	2.00
✓ Parking:	Direct Garage Access
Spa:	1
✓ Fireplace:	Living room
✓ Lot Features:	Back Yard
✓ Security:	Carbon monoxide detector(s), Smoke Detector(s)
✓ Patio:	Brick, Slab
✓ Furnished:	

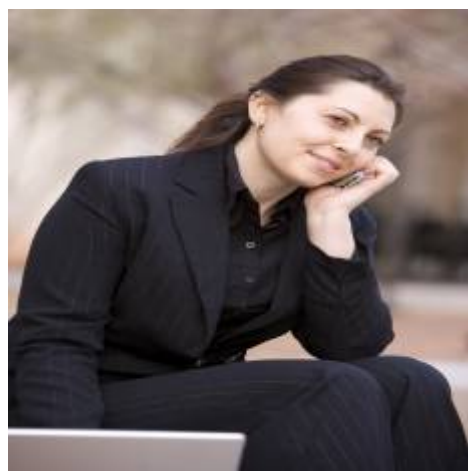
Zipcode:	92833		Unfurnished
Listing ID:	PW25187123	Entry Level:	1
		✓ Laundry:	Gas Dryer Hookup, Washer Hookup, In Garage
		✓ Room Type:	Living Room, Walk-in Closet, Kitchen, All Bedrooms Up, Primary Bathroom, Primary Bedroom
		✓ Roofing:	Tile
		✓ Flooring:	Tile, Laminate
		✓ Entry Location:	Level One
		✓ Spa Construction:	Association
		✓ Property Condition:	Turnkey
		✓ Interior Features:	High Ceilings, Recessed Lighting, Cathedral Ceiling(s), Granite Counters
		Main Level Bathrooms:	1
		✓ Heating System:	Central
		✓ Cooling System:	Central Air
		✓ Utilities:	Sewer Connected, Water Connected, Electricity Connected, Natural Gas Connected
		✓ Water Source:	Public
		✓ Sewer:	Public Sewer
		✓ Appliances:	Dishwasher, Electric Oven, Electric Range

MLS [Addon](#)

Parcel Number:	93624027
Lot Size Square Feet:	238,629

TaxAnnualAmount:	\$0
<div> <div>✓</div> <div>RoomKitchenFeatures:</div> <div>Granite Counters</div> </div>	
<div> <div>✓</div> <div>RoomBathroomFeatures:</div> <div>Shower, Bathtub, Granite Counters, Remodeled, Quartz Counters</div> </div>	
Garage Spaces:	2
High School:	Sunny Hills
High School 2:	Sunhil
Middle Or Junior School:	Parks
Elementary School:	Fisler
High School District:	Fullerton Joint Union High
Levels:	Two
<div> <div>✓</div> <div>EatingArea:</div> <div>Area, Breakfast Counter / Bar</div> </div>	
Lease Term :	12 Months
Taxes:	\$0
Guest House SqFt:	0
Approx Lot SqFt:	0
<div> <div>✓</div> <div>Special Listing Conditions:</div> <div>Standard</div> </div>	

Agent
[Info](#)



Rina Maya

858-876-7946

800-878-0907

Questions@unitedbrokersinc.net

