

Residential Rent For Rent

2,289 Sqft - 19732 Greenleaf, Yorba Linda,
California, 92886



Basic Details

Status:	Active
Listing Type:	For Rent
Property Type:	Residential Rent
Property SubType:	Single Family Residence
Price:	\$4,950
Price Per Square Foot:	\$2
Square Footage:	2,289 Sqft
Lot Area:	0.15 Sqft
Year Built:	1970
View:	Mountain(s)
Bedrooms:	3
Bathrooms:	3
Bathrooms (Full):	3
Country:	US
State:	California
County:	Orange
City:	Yorba Linda
Zipcode:	92886

Features

Association:	0
Senior Community:	0
✓ Common Walls:	No Common Walls
Stories:	1
✓ Pet Policy:	Number limit, Yes
✓ Community Features:	Sidewalks, Street Lights, Hiking, Park, Curbs, Gutters
AttachedGarage :	1
✓ Parking:	5.00
✓ Parking:	Driveway, Direct Garage Access, Garage - Single Door, Garage, Driveway Level, Concrete, On Site, Garage Faces Front
Spa:	0
✓ Fireplace:	Living room, Wood Burning
✓ Lot Features:	Back Yard, Front Yard, Cul-de-sac, Park Nearby, Sprinkler System, Landscaped, Level With Street, Level, Yard, Sprinklers On Side, Lawn, Secluded, Garden,

Listing ID:	PW25186311	Sprinklers In Rear, Sprinklers In Front, Walkstreet, Flag Lot
✓	Fence:	Vinyl, Block
✓	Security:	Carbon monoxide detector(s), Smoke Detector(s)
✓	Patio:	Front Porch, Slab, Screened Porch
✓	Furnished:	Unfurnished
✓	Electric:	220 Volts In Garage, 220 Volts In Kitchen
Entry Level:		1
✓	Laundry:	Individual Room, Inside
✓	Room Type:	Family Room, Living Room, Walk-in Closet, Kitchen, Laundry, All Bedrooms Down, Entry, Main Floor Primary Bedroom, Primary Suite, Primary Bathroom, Two Primaries
✓	Roofing:	Composition
✓	Flooring:	Wood, Tile
✓	Entry Location	
✓	Property Condition:	Turnkey
✓	Foundation Details:	Slab
✓	Exterior Features:	Rain Gutters
✓	Interior Features:	Built-in Features, Crown Molding, Open Floorplan, Pantry, Recessed Lighting, Wired For Data, In-law Floorplan, Cathedral Ceiling(s), Ceiling Fan(s), Granite Counters, Copper Plumbing Full
Main Level Bathrooms:		3
Main Level Bedrooms:		3

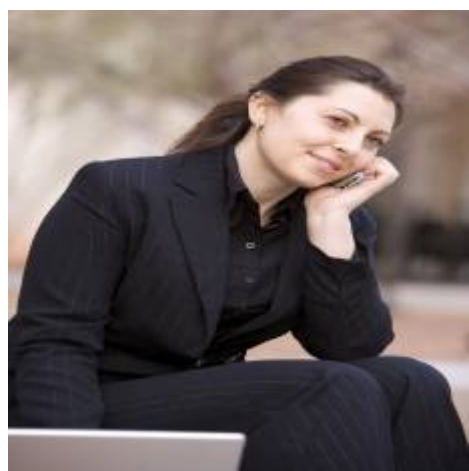
✓	Heating System:	Forced air
✓	Cooling System:	Central Air
✓	Utilities:	Sewer Connected, Cable Connected
✓	Water Source:	Public
✓	Sewer:	Sewer Paid
✓	Appliances:	Dishwasher, Disposal, 6 Burner Stove, Electric Oven, Gas Water Heater, Microwave, Convection Oven, Gas Cooktop, Range Hood, High Efficiency Water Heater, Water Softener
✓	Accessibility Features:	No Interior Steps

MLS Addon

Parcel Number:	34929125
Lot Size Square Feet:	6,600 Sqft
TaxAnnualAmount:	\$0
✓ RoomKitchenFeatures:	Granite Counters, Kitchen Island, Pots & Pan Drawers, Remodeled Kitchen, Self-closing Cabinet Doors, Kitchen Open To Family Room, Self-closing Drawers, Walk-in Pantry, Butler's Pantry, Utility Sink, Built-in Trash/recycling
✓ RoomBathroomFeatures:	Shower, Bathtub, Walk-in Shower, Exhaust Fan(s), Granite Counters, Linen Closet/storage, Remodeled, Shower In Tub, Double Sinks In Bath(s), Double Sinks In Primary Bath
Garage Spaces:	2
High School:	Esperanza
High School 2:	Espera

Middle Or Junior School:	Miller
Elementary School:	Glen Knoll
High School District:	Placentia-Yorba Linda Unified
Levels:	One
<div>✓</div> EatingArea:	Area, Breakfast Counter / Bar
Lease Term :	12 Months,24 Months
Taxes:	\$0
Guest House SqFt:	0 Sqft
Approx Lot SqFt:	0 Sqft

Agent [Info](#)



Rina Maya
☎ 858-876-7946
☎ 800-878-0907
✉ Questions@unitedbrokersinc.net

-