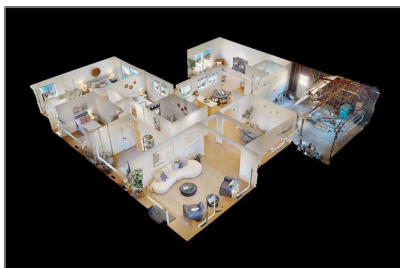


# Residential For Sale

2,086 Sqft - 2688 Gamblin Drive, Santa Clara,  
California, 95051



## Basic Details

Status:	Active
Listing Type:	For Sale
Property Type:	Residential
Property SubType:	Single Family Residence
Price:	\$2,588,000
Price Per Square Foot:	\$1,241
Square Footage:	2,086 Sqft
Lot Area:	0.18 Sqft
Year Built:	1976
View:	Mountain(s)
Bedrooms:	4
Bathrooms:	3
Bathrooms (Full):	2
Bathrooms (1/2):	1
State:	California
County:	Santa Clara
City:	Santa Clara
Zipcode:	95051
Listing ID:	ML82015658

## Features

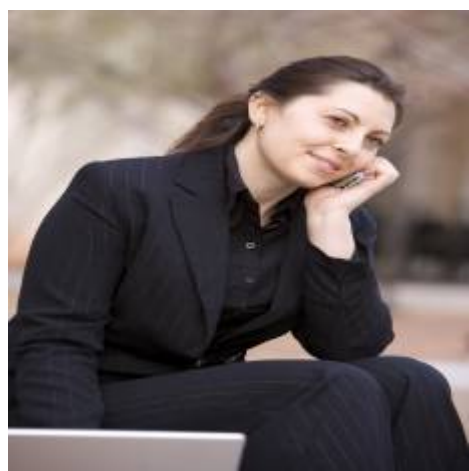
Association:	0
✓ Common Walls:	No Common Walls
Stories:	1
✓ Pool:	In ground
Attached Garage:	1
✓ Parking:	2.00
Spa:	1
✓ Fireplace:	Wood Burning
✓ Roofing:	Tile, Concrete
✓ Spa Construction:	In Ground
✓ Cooling System:	Central Air
✓ Water Source:	Public

MLS [Addon](#)

Zoning:	<b>R1</b>
Parcel Number:	<b>29437006</b>
Lot Size Square Feet:	<b>8,050 Sqft</b>
TaxAnnualAmount:	<b>\$0</b>
Garage Spaces:	<b>2</b>
High School:	<b>Santa Clara</b>
High School 2:	<b>Sancla</b>
Middle Or Junior School:	<b>Buchser</b>
Elementary School:	<b>Other</b>
High School District:	<b>Other</b>
Taxes:	<b>\$0</b>
Guest House SqFt:	<b>0 Sqft</b>
Approx Lot SqFt:	<b>0 Sqft</b>
<input checked="" type="checkbox"/> Special Listing Conditions:	<a href="#">Standard</a>

Virtual Tour [Click Here](#)  
URL Unbranded:

Agent [Info](#)



Rina Maya  
 858-876-7946  
 800-878-0907  
 [Questions@unitedbrokersinc.net](mailto:Questions@unitedbrokersinc.net)

