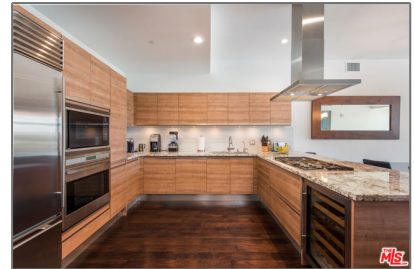
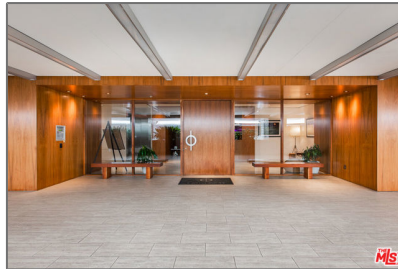


# Residential Rent For Rent

1,550 Sqft - 3111 VIA DOLCE, Marina del Rey,  
California, 90292



## Basic Details

Status:	Active
Listing Type:	For Rent
Property Type:	Residential Rent
Property SubType:	Condominium
Price:	\$7,750
Price Per Square Foot:	\$5
Square Footage:	1,550 Sqft
Lot Area:	0.63 Sqft
Year Built:	2010
View:	Mountain(s)
Bedrooms:	2
Bathrooms:	3
Bathrooms (Full):	2
Bathrooms (1/2):	1
Country:	US
State:	California
County:	Los Angeles
City:	Marina del Rey
Zipcode:	90292

## Features

✓	View:	Ocean
	Association:	0
	Senior Community:	0
	Stories:	9
✓	Amenities:	Trash, Gas, Electricity, Concierge
✓	Parking:	2.00
✓	Parking:	Covered
✓	Furnished:	Furnished
✓	Laundry:	Dryer Included, Washer Included
✓	Flooring:	Wood
✓	Entry Location:	Up Steps
✓	Interior Features:	Recessed Lighting
✓	Heating System:	Forced air

Listing ID:

25527485

MLS [Addon](#)

Zoning:

LAC2

Parcel Number:

4225003033

Lot Size Square Feet:

27,349

TaxAnnualAmount:

\$0

✓

RoomKitchenFeatures:

Granite Counters

✓

RoomBathroomFeatures:

Shower In Tub

Garage Spaces:

2

High School:

Arlington

High School 2:

Arling

Middle Or Junior School:

Miller

Levels:

One

Lease Term :

12 Months

Taxes:

\$0

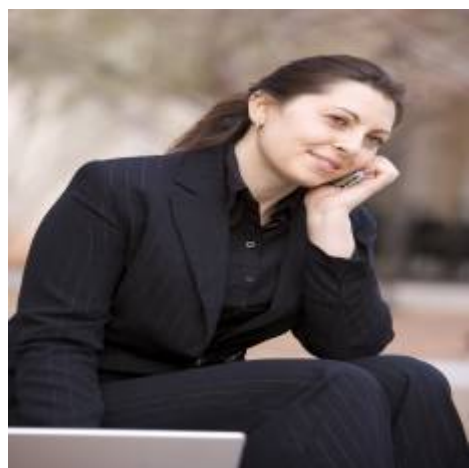
Guest House SqFt:

0

Approx Lot SqFt:

0

Agent [Info](#)



Rina Maya

📞

858-876-7946

📞

800-878-0907

✉️

Questions@unitedbrokersinc.net

