

# Manufactured In Park For Sale

1,656 Sqft - 3390 AshwoodWay, Soquel, California, 95073



## Basic [Details](#)

Status: **Active**

Listing Type: **For Sale**

Property Type: **Manufactured In Park**

Price: **\$699,000**

Price Per Square Foot: **\$422**

Square Footage: **1,656 Sqft**

Year Built: **2006**

View: **Mountain(s)**

Bedrooms: **2**

Bathrooms: **2**

Bathrooms (Full): **2**

State: **California**

County: **Santa Cruz**

City: **Soquel**

Zipcode: **95073**

Listing ID: **ML82018274**

## Features

Association: **1**

✓ Common Walls: **No Common Walls**

✓ Amenities: **Clubhouse, Management, Recreation Room**

AttachedGarage : **0**

✓ Parking: **2.00**

✓ Parking: **Guest, Covered, Carport**

✓ Room Type: **Office, Walk-in Closet, Laundry**

✓ Roofing: **Composition**

✓ Flooring: **Wood**

✓ Window Features: **Skylight(s)**

✓ Heating System: **Central**

✓ Water Source: **Public**

✓ Appliances: **Dishwasher, Disposal, Microwave, Refrigerator**

MLS [Addon](#)

Zoning: **Residential**

Parcel Number: **03711325039**

TaxAnnualAmou  
nt: **\$0**

Association Fee: **\$190**

☒ RoomKitchenFeatu  
res: [Kitchen Island](#)

☒ RoomBathroomFeat  
ures: [Double Sinks In Bath\(s\)](#)

High School: **Arlington**

High School 2: **Arling**

Middle Or Junior  
School: **Miller**

High School  
District: **Other**

Taxes: **\$0**

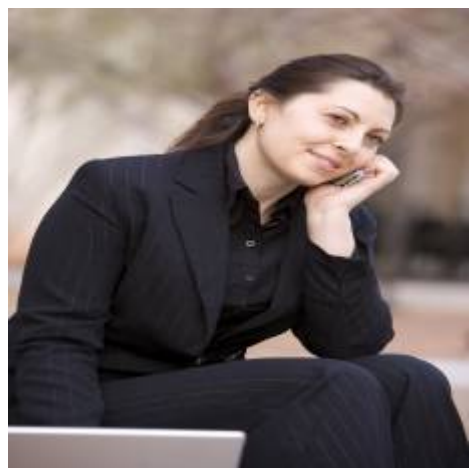
Guest House  
SqFt: **0 Sqft**

Approx Lot SqFt: **0 Sqft**

☒ Special Listing  
Conditions: [Standard](#)

Virtual Tour  
URL Unbranded: [Click Here](#)

Agent [Info](#)



Rina Maya  
 858-876-7946  
 800-878-0907  
 [Questions@unitedbrokersinc.net](mailto:Questions@unitedbrokersinc.net)

---