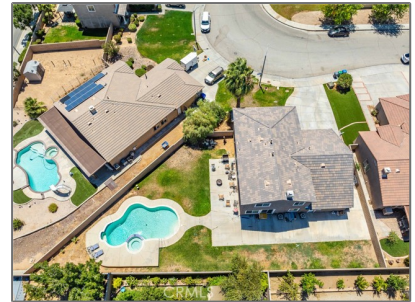


Residential For Sale

2,916 Sqft - 2511 AdamLane, Palmdale, California, 93551



Basic Details

Status:	Active
Listing Type:	For Sale
Property Type:	Residential
Property SubType:	Single Family Residence
Price:	\$599,990
Price Per Square Foot:	\$206
Square Footage:	2,916 Sqft
Lot Area:	0.23 Sqft
Year Built:	2003
View:	Mountain(s)
Bedrooms:	4
Bathrooms:	3
Bathrooms (Full):	3
Country:	US
State:	California
County:	Los Angeles
City:	Palmdale
Zipcode:	93551

Features

Association:	0
Senior Community:	0
✓ Common Walls:	No Common Walls
Stories:	2
✓ Community Features:	Sidewalks, Street Lights, Curbs, Storm Drains
✓ Pool:	In ground, Private, Gunite
AttachedGarage :	1
✓ Parking:	3.00
✓ Parking:	Driveway, Paved, Garage - Single Door, Garage, Rv Access/parking, Garage Faces Front, Pull-through
Spa:	1
✓ Fireplace:	Family room
✓ Lot Features:	Back Yard, Front Yard, Yard, Lawn
✓ Fence:	Wrought iron, Block
Entry Level:	1
✓ Laundry:	Inside

Listing ID:		SR25179777	
✓	Room Type:	Family Room, Living Room, Separate Family Room, Walk-in Closet, Kitchen, Main Floor Bedroom	
✓	Roofing:	Tile	
✓	Flooring:	Carpet, Tile	
✓	Entry Location		
✓	Spa Construction:	In Ground, Gunite, Private	
✓	Foundation Details:	Slab	
✓	Interior Features:	Formica Counters	
Main Level Bathrooms:		1	
Main Level Bedrooms:		1	
✓	Heating System:	Central	
✓	Cooling System:	Central Air	
✓	Utilities:	Sewer Connected, Water Connected, Electricity Connected, Natural Gas Connected	
✓	Water Source:	Public	
✓	Sewer:	Public Sewer	
✓	Appliances:	Dishwasher, Disposal, Gas Range, Microwave	
MLS Addon			
Zoning:		LCA22*	
Parcel Number:		3003089009	
Lot Size Square Feet:		9,964	
TaxAnnualAmount:		\$0	
✓	RoomKitchenFeatures:	Granite Counters, Kitchen Open To Family	

Room	
<div> <div>✓</div> <div>RoomBathroomFeatures:</div> </div>	<div> Shower, Bathtub, Separate Tub And Shower, Soaking Tub, Walk-in Shower, Shower In Tub, Main Floor Full Bath, Double Sinks In Primary Bath </div>
Garage Spaces:	3
High School:	Arlington
High School 2:	Arling
Middle Or Junior School:	Miller
High School District:	See Remarks
Levels:	Two
<div> <div>✓</div> <div>EatingArea:</div> </div>	<div> Dining Room, Area, Breakfast Counter / Bar </div>
Taxes:	\$0
Guest House SqFt:	0
Approx Lot SqFt:	0
<div> <div>✓</div> <div>Special Listing Conditions:</div> </div>	<div> Standard </div>

Agent [Info](#)



Rina Maya
📞 858-876-7946
📞 800-878-0907
✉ Questions@unitedbrokersinc.net