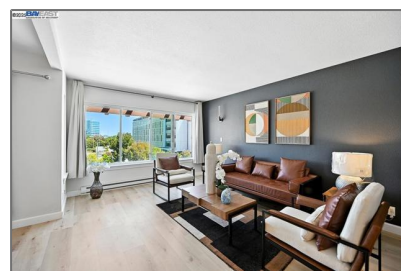
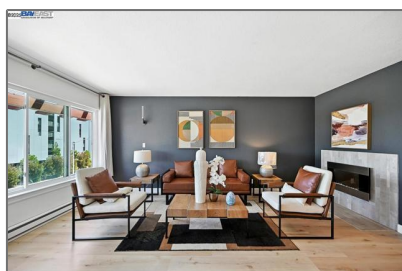
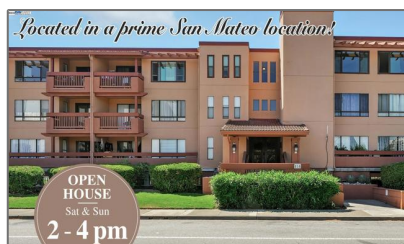


# Residential For Sale

875 Sqft - 456 Mariners Island Blvd, San Mateo,  
California, 94404



## Basic Details

|                        |             |
|------------------------|-------------|
| Status:                | Active      |
| Listing Type:          | For Sale    |
| Property Type:         | Residential |
| Property SubType:      | Condominium |
| Price:                 | \$628,000   |
| Price Per Square Foot: | \$718       |
| Square Footage:        | 875 Sqft    |
| Lot Area:              | 0.02 Sqft   |
| Year Built:            | 1978        |
| View:                  | Mountain(s) |
| Bedrooms:              | 1           |
| Bathrooms:             | 1           |
| Bathrooms (Full):      | 1           |
| State:                 | California  |
| County:                | San Mateo   |
| City:                  | San Mateo   |
| Zipcode:               | 94404       |
| Listing ID:            | 41109003    |

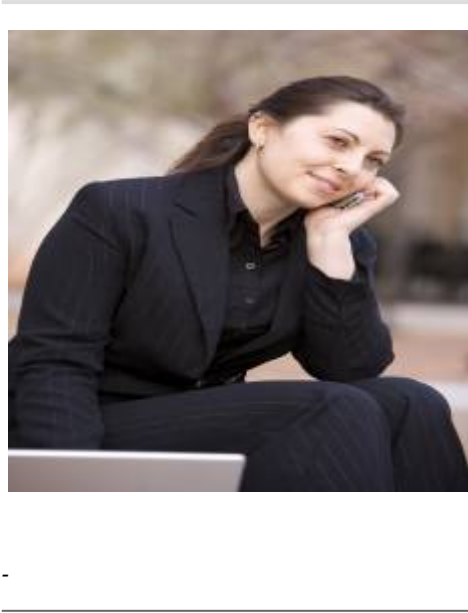
## Features

|                   |   |
|-------------------|---|
| Association:      | 1   |
| ✓ Amenities:      | Pool, Clubhouse, Playground, Gym/ex Room, Maintenance Grounds, Trash, Water |
| AttachedGarage :  | 1   |
| ✓ Parking         |   |
| ✓ Parking:        | Covered, Off Street, Carport, Subterranean                                  |
| ✓ Fireplace:      | Living room   |
| ✓ Patio:          | Patio   |
| ✓ Laundry:        | Dryer Included, Washer Included   |
| ✓ Flooring:       | Laminate  |
| ✓ Heating System: | Baseboard, Wall Furnace   |
| ✓ Sewer:          | Public Sewer  |

MLS [Addon](#)


|                            |                  |
|----------------------------|------------------|
| Association Fee Frequency: | <b>Monthly</b>   |
| Parcel Number:             | <b>106500180</b> |
| Lot Size Square Feet:      | <b>878</b>       |
| TaxAnnualAmount:           | <b>\$0</b>       |
| Association Fee:           | <b>\$614</b>     |
| High School:               | <b>Arlington</b> |
| High School 2:             | <b>Arling</b>    |
| Middle Or Junior School:   | <b>Miller</b>    |
| Levels:                    | <b>One</b>       |
| Taxes:                     | <b>\$0</b>       |
| Guest House SqFt:          | <b>0</b>         |
| Approx Lot SqFt:           | <b>0</b>         |


Agent [Info](#)



Rina Maya

 858-876-7946

 800-878-0907

 [Questions@unitedbrokersinc.net](mailto:Questions@unitedbrokersinc.net)