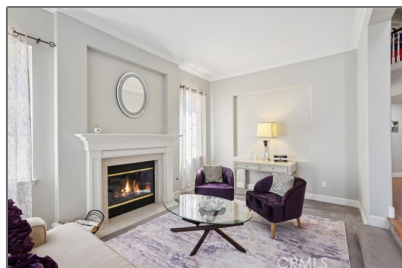


# Residential For Sale

4,028 Sqft - 23251 Eagle Ridge, Mission Viejo,  
California, 92692



## Basic Details

Status: **Active**

Listing Type: **For Sale**

Property Type: **Residential**

Property SubType: **Single Family Residence**

Price: **\$1,995,000**

Price Per Square Foot: **\$495**

Square Footage: **4,028 Sqft**

Lot Area: **0.13 Sqft**

Year Built: **2000**

View: **Mountain(s)**

Bedrooms: **5**

Bathrooms: **3**

Bathrooms (Full): **3**

Country: **US**

State: **California**

County: **Orange**

City: **Mission Viejo**

Zipcode: **92692**

Listing ID: **OC25183297**

## Features

✓ View: **City Lights, Mountain(s), Lake**

Association: **1**

Senior Community: **0**

✓ Common Walls: **No Common Walls**

Stories: **3**

✓ Community Features: **Sidewalks, Dog Park, Biking**

✓ Amenities: **Guard, Outdoor Cooking Area, Picnic Area, Playground, Other, Controlled Access, Dog Park**

AttachedGarage : **1**

✓ Parking: **3.00**

✓ Parking: **Garage, Tandem Garage, Garage Faces Front**

Spa: **0**

✓ Fireplace: **Living room, Family room**

✓ Lot Features: **0-1 Unit/acre**

✓ Fence: **Stucco wall, Wrought iron**

✓	Security:	Gated community, Carbon monoxide detector(s), Smoke Detector(s), Gated With Attendant
✓	Patio:	Concrete
✓	Inclusions:	Ring Doorbell, Stackable Washer And Dryer, Available Partialy Furnished...except For The Bedroom/ Some Living Room, Green House

Entry Level:	<b>1</b>
--------------	----------

✓	Laundry:	Individual Room, Inside
✓	Room Type:	Family Room, Living Room, Kitchen, Laundry, Primary Bathroom, Primary Bedroom
✓	Flooring:	Carpet, Laminate
✓	Window Features:	Double Pane Windows, Plantation Shutters
✓	Entry Location:	Driveway
✓	Foundation Details:	Slab
✓	Exterior Features:	Rain Gutters
✓	Interior Features:	Pantry, Balcony, Ceiling Fan(s), Granite Counters

Main Level Bathrooms:	<b>1</b>
-----------------------	----------

✓	Heating System:	Central
✓	Cooling System:	Central Air
✓	Utilities:	Sewer Connected, Water Connected, Cable Available, Electricity Connected, Natural Gas Connected, Phone Available
✓	Water Source:	Public
✓	Sewer:	Public Sewer
✓	Appliances:	

MLS [Addon](#)

Association Fee Frequency:	<b>Monthly</b>
----------------------------	----------------

Parcel Number:	<b>78653119</b>
----------------	-----------------

Lot Size Square Feet:	<b>5,580 Sqft</b>
-----------------------	-------------------

Lot Size Dimensions:	<b>5580</b>
----------------------	-------------

TaxAnnualAmount:	<b>\$0</b>
------------------	------------

Association Fee 2:	<b>\$29</b>
--------------------	-------------

Association Fee:	<b>\$297</b>
------------------	--------------

Association Fee 2 Frequency:	<b>Monthly</b>
------------------------------	----------------

<div>✓</div> RoomBathroomFeatures:	<a href="#">Shower, Bathtub, Separate Tub And Shower, Walk-in Shower, Exhaust Fan(s), Shower In Tub, Main Floor Full Bath, Double Sinks In Primary Bath</a>
------------------------------------	---

Garage Spaces:	<b>3</b>
----------------	----------

High School:	<b>Capistrano Valley</b>
--------------	--------------------------

High School 2:	<b>Capval</b>
----------------	---------------

Middle Or Junior School:	<b>Newhart</b>
--------------------------	----------------

Elementary School:	<b>Riley</b>
--------------------	--------------

High School District:	<b>Capistrano Unified</b>
-----------------------	---------------------------

Levels:	<b>Three Or More</b>
---------	----------------------

<div>✓</div> EatingArea:	<a href="#">Dining Room, In Kitchen</a>
--------------------------	---

Taxes:	<b>\$0</b>
--------	------------

Guest House SqFt:	<b>0 Sqft</b>
-------------------	---------------

Approx Lot SqFt:

0 Sqft

✓

Special Listing  
Conditions:

Standard

Agent [Info](#)

---



Rina Maya  
 858-876-7946  
 800-878-0907  
 [Questions@unitedbrokersinc.net](mailto:Questions@unitedbrokersinc.net)

-

---