

Residential For Sale

2,047 Sqft - 15723 ParkhouseDrive, Fontana,
California, 92336



Basic [Details](#)

Status: **Active**

Listing Type: **For Sale**

Property Type: **Residential**

Property SubType: **Condominium**

Price: **\$565,000**

Price Per Square Foot: **\$276**

Square Footage: **2,047 Sqft**

Lot Area: **0.05 Sqft**

Year Built: **2009**

View: **Mountain(s)**

Features

✓ View: **Courtyard**

Association: **1**

Senior Community: **0**

✓ Common Walls: **1 Common Wall**

Stories: **2**

✓ Community Features: **Sidewalks, Street Lights, Suburban, Hiking, Park, Curbs, Dog Park, Biking, Storm Drains**

✓ Pool: **Fenced, Heated, Association**

✓ Amenities: **Pool, Spa/hot Tub, Tennis**

Bedrooms:	4	Court(s), Clubhouse, Meeting Room, Barbecue, Outdoor Cooking Area, Playground, Gym/ex Room, Maintenance Grounds, Pets Permitted, Billiard Room, Banquet Facilities, Trash, Security, Water, Other Courts
Bathrooms:	3	
Bathrooms (Full):	2	
Bathrooms (1/2):	1	
Country:	US	
State:	California	AttachedGarage : 1
County:	San Bernardino	
City:	Fontana	
Zipcode:	92336	
Listing ID:	CV25184814	
		Spa: 1
✓	Parking:	2.00
✓	Fireplace:	Living room
✓	Patio:	Patio, Enclosed, Porch
✓	Inclusions:	Washer, Dryer, Refrigerator, Microwave
		Entry Level: 1
✓	Laundry:	Individual Room, Inside, Upper Level, Washer Included
✓	Room Type:	Family Room, Walk-in Closet, Laundry, All Bedrooms Up, Walk-in Pantry
✓	Flooring:	Carpet, Tile
✓	Entry Location:	Front Door
✓	Spa Construction:	In Ground, Association
✓	Interior Features:	High Ceilings, Open Floorplan, Pantry, Recessed Lighting, Ceiling Fan(s), Granite Counters, Unfurnished
Main Level Bathrooms:		1
✓	Heating System:	Central
✓	Cooling System:	Central Air
✓	Utilities:	Sewer Connected, Water Connected, Electricity Connected, Natural Gas

Connected, Underground
Utilities, Cable
Connected



Water Source:

Public



Sewer:

Public Sewer



Appliances:

Dishwasher, Disposal,
Gas Water Heater,
Microwave, Refrigerator,
Gas Oven, Gas Cooktop,
Water Line To
Refrigerator, Water
Heater

MLS Addon

Association Fee
Frequency: **Monthly**

Parcel Number: **1107431500000**

Lot Size Square
Feet: **2,047**



Exclusions:

Tv Brackets

TaxAnnualAmou
nt: **\$0**

Association Fee
2: **\$450**

Association Fee: **\$214**



RoomKitchenFeatu
res:

Granite Counters,
Kitchen Island, Kitchen
Open To Family Room,
Walk-in Pantry



RoomBathroomFeat
ures:

Shower, Bathtub,
Exhaust Fan(s), Shower
In Tub, Double Sinks In
Bath(s), Double Sinks In
Primary Bath

Garage Spaces: **2**

High School: **Arlington**

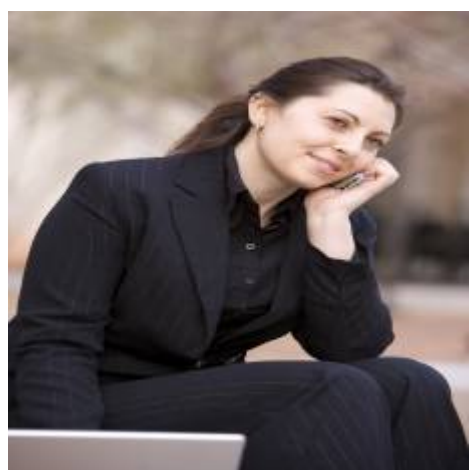
High School 2: **Arling**

Middle Or Junior
School: **Miller**

High School
District: **Fontana Unified**

Levels:	Two
Taxes:	\$0
Guest House SqFt:	0
Approx Lot SqFt:	0
<div>✓ Special Listing Conditions:</div>	Standard

Agent [Info](#)



Rina Maya
☎ 858-876-7946
☎ 800-878-0907
✉ Questions@unitedbrokersinc.net

-
