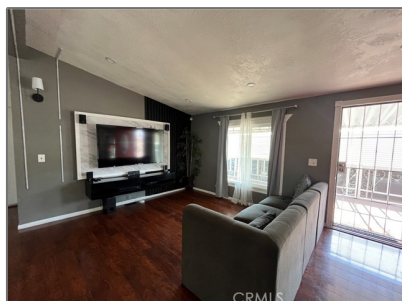


Manufactured In Park For Sale

1,248 Sqft - 20683 WaalewRoad, Apple Valley, California, 92307



Basic Details

Status: **Active**

Listing Type: **For Sale**

Property Type: **Manufactured In Park**

Price: **\$134,900**

Price Per Square Foot: **\$108**

Square Footage: **1,248 Sqft**

Lot Area: **0.03 Sqft**

Year Built: **1984**

View: **Mountain(s)**

Bedrooms: **3**

Bathrooms: **2**

Bathrooms (Full): **2**

Country: **US**

State: **California**

County: **San Bernardino**

City: **Apple Valley**

Zipcode: **92307**

Features

Association: **0**

Senior Community: **0**

✓ Common Walls: **No Common Walls**

Stories: **1**

✓ Community Features: **Valley, Biking**

✓ Pool: **Community**

✓ Amenities: **Pool, Tennis Court(s), Clubhouse, Playground, Gym/ex Room**

✓ Parking: **2.00**

✓ Lot Features: **0-1 Unit/acre**

Entry Level: **1**

✓ Laundry: **Dryer Included, Washer Included**

✓ Flooring: **Wood**

✓ Entry Location: **Main Level**

✓ Interior Features: **Pantry, Granite Counters**

Main Level Bathrooms: **2**

Listing ID:	HD25184135	Main Level Bedrooms:	3
		✓ Heating System:	Central
		✓ Cooling System:	Central Air
		✓ Utilities:	Sewer Connected, Water Connected, Electricity Connected
		✓ Water Source:	Public
		✓ Sewer:	Public Sewer
		✓ Appliances:	Dishwasher, Microwave

MLS Addon

Zoning:	MPR1YY
Parcel Number:	0441011566005
Lot Size Square Feet:	1,248 Sqft
TaxAnnualAmount:	\$0
✓ RoomKitchenFeatures:	Granite Counters, Kitchen Island
High School:	Arlington
High School 2:	Arling
Middle Or Junior School:	Miller
High School District:	Apple Valley Unified
Levels:	One
✓ EatingArea:	In Kitchen, Breakfast Nook
Taxes:	\$0
Guest House SqFt:	0 Sqft
Approx Lot SqFt:	0 Sqft
✓ Special Listing Conditions:	Standard



Rina Maya
☎ 858-876-7946
☎ 800-878-0907
✉ Questions@unitedbrokersinc.net