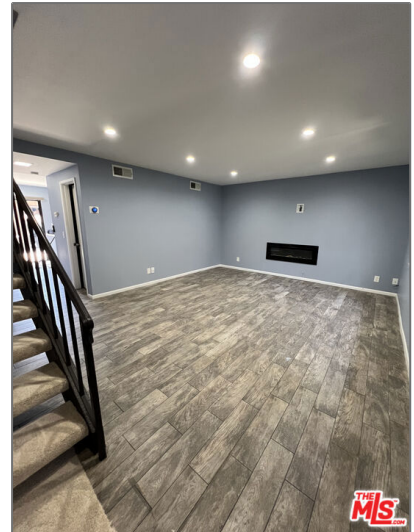


Residential For Sale

1,233 Sqft - 14456 FoothillBoulevard, Sylmar,
California, 91342



Basic Details

Status:	Active
Listing Type:	For Sale
Property Type:	Residential
Property SubType:	Condominium
Price:	\$649,990
Price Per Square Foot:	\$527
Square Footage:	1,233 Sqft
Lot Area:	4.50 Sqft
Year Built:	1979
View:	Mountain(s)
Bedrooms:	3
Bathrooms:	3
Bathrooms (Full):	2
Bathrooms (1/2):	1
Country:	US

Features

Association:	1
Senior Community:	0
✓ Common Walls:	1 Common Wall
Stories:	2
✓ Pool:	Community
✓ Parking:	2.00
✓ Parking:	Assigned
Entry Level:	1
✓ Room Type:	Family Room
✓ Roofing:	Composition, Shingle
✓ Flooring:	Carpet
✓ Heating System:	Central
✓ Cooling System:	Central Air
✓ Appliances:	Dishwasher, Microwave, Refrigerator, Oven

State:	California
County:	Los Angeles
City:	Sylmar
Zipcode:	91342
Listing ID:	25581113

MLS [Addon](#)

Association Fee Frequency:	Monthly
Zoning:	LARD3
Parcel Number:	2502023045
Lot Size Square Feet:	195,807 Sqft
TaxAnnualAmount:	\$0
Association Fee:	\$350
High School:	Arlington
High School 2:	Arling
Middle Or Junior School:	Miller
Levels:	Two
Lease Term :	12 Months
Taxes:	\$0
Guest House SqFt:	0 Sqft
Approx Lot SqFt:	0 Sqft
<input checked="" type="checkbox"/> Special Listing Conditions:	Standard

Agent [Info](#)



Rina Maya

☎ 858-876-7946

☎ 800-878-0907

✉ Questions@unitedbrokersinc.net
