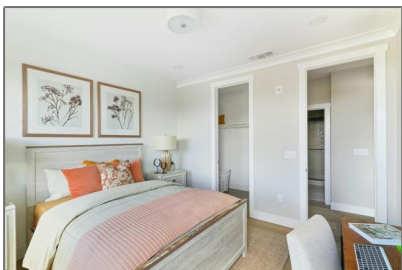
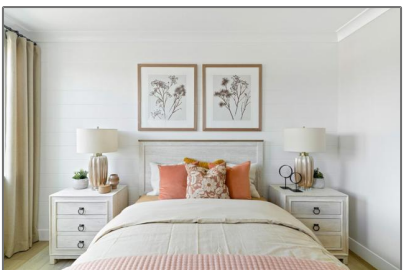


# Residential For Sale

1,501 Sqft - 1303 BesraTerrace, Sunnyvale,  
California, 94087



## Basic Details

Status: **Active**

Listing Type: **For Sale**

Property Type: **Residential**

Property SubType: **Condominium**

Price: **\$1,524,000**

Price Per Square Foot: **\$1,015**

Square Footage: **1,501 Sqft**

Year Built: **2025**

View: **Mountain(s)**

Bedrooms: **3**

Bathrooms: **2**

Bathrooms (Full): **2**

State: **California**

County: **Santa Clara**

City: **Sunnyvale**

Zipcode: **94087**

Listing ID: **ML82019292**

## Features

Association: **1**

Stories: **0**

✓ Amenities: **Management, Insurance**

AttachedGarage : **1**

✓ Parking: **2.00**

✓ Roofing: **Other**

✓ Foundation Details: **Slab**

✓ Heating System: **Heat Pump**

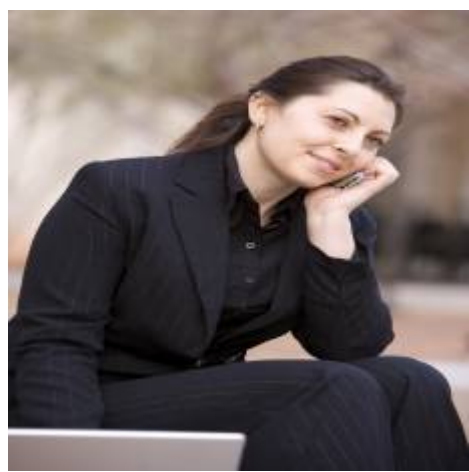
✓ Cooling System: **Central Air**

✓ Water Source: **Public**

✓ Sewer: **Public Sewer**

Zoning:	<b>R3</b>
Parcel Number:	<b>000000000</b>
TaxAnnualAmount:	<b>\$0</b>
Association Fee:	<b>\$314</b>
Garage Spaces:	<b>2</b>
High School:	<b>Arlington</b>
High School 2:	<b>Arling</b>
Middle Or Junior School:	<b>Miller</b>
High School District:	<b>Other</b>
Taxes:	<b>\$0</b>
Guest House SqFt:	<b>0 Sqft</b>
Approx Lot SqFt:	<b>0 Sqft</b>

Agent [Info](#)



Rina Maya  
☎ 858-876-7946  
☎ 800-878-0907  
✉ [Questions@unitedbrokersinc.net](mailto:Questions@unitedbrokersinc.net)