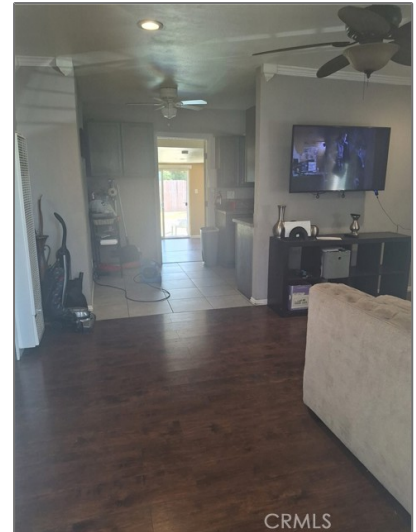
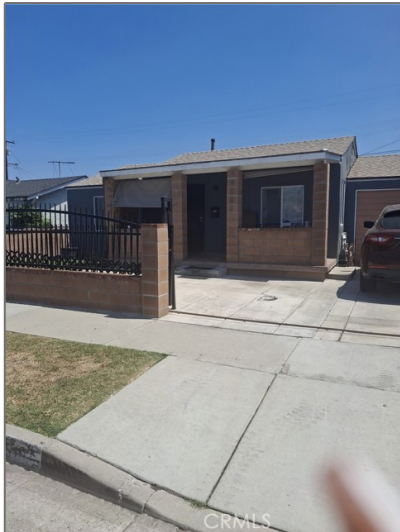


Residential For Sale

672 Sqft - 14502 Keene Avenue, Compton,
California, 90220



Basic Details

Status:	Active
Listing Type:	For Sale
Property Type:	Residential
Property SubType:	Single Family Residence
Price:	\$670,000
Price Per Square Foot:	\$997
Square Footage:	672 Sqft
Lot Area:	0.12 Sqft
Year Built:	1943
View:	Mountain(s)
Bedrooms:	2
Bathrooms:	1
Bathrooms (Full):	1
Country:	US
State:	California

Features

Association:	0
Senior Community:	0
✓ Common Walls:	No Common Walls
Stories:	1
✓ Community Features:	Park
Attached Garage:	1
✓ Parking:	
✓ Parking:	Driveway, Concrete
Spa:	0
✓ Lot Features:	0-1 Unit/acre
✓ Inclusions:	
Entry Level:	1
✓ Laundry:	Gas Dryer Hookup, Inside, Washer Hookup
✓ Room Type:	All Bedrooms Down, Converted Bedroom

County:	Los Angeles	✓	Flooring:	Laminate
City:	Compton	✓	Entry Location:	Front
Zipcode:	90220	✓	Interior Features:	Ceiling Fan(s), Granite Counters
Listing ID:	SB25191896			
			Main Level Bathrooms:	2
			Main Level Bedrooms:	3
		✓	Heating System:	Wall Furnace
		✓	Sewer:	Public Sewer
		✓	Appliances:	Microwave, Water Heater

MLS Addon

Zoning:	LCR1*	
Parcel Number:	6137026027	
Lot Size Square Feet:	5,035	
<div>✓</div> Exclusions:	Bedroom Furniture Set	
TaxAnnualAmou nt:	\$0	
<div>✓</div> RoomKitchenFeatu res:	Granite Counters, Remodeled Kitchen	
Garage Spaces:	1	
High School:	Arlington	
High School 2:	Arling	
Middle Or Junior School:	Miller	
High School District:	Compton Unified	
Levels:	One	
<div>✓</div> EatingArea:	In Kitchen	
Taxes:	\$0	
Guest House SqFt:	0	

Approx Lot SqFt:

0

✓

Special Listing
Conditions:

Standard

Agent [Info](#)



Rina Maya
 858-876-7946
 800-878-0907
 Questions@unitedbrokersinc.net

-
