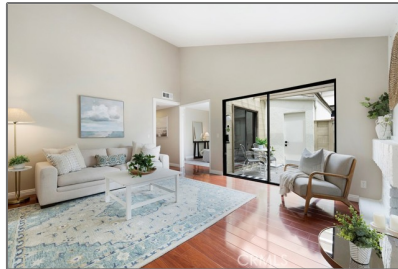


# Residential For Sale

1,122 Sqft - 242 MountainCourt, Brea, California,  
92821



## Basic Details

Status:	Active
Listing Type:	For Sale
Property Type:	Residential
Property SubType:	Single Family Residence
Price:	\$650,000
Price Per Square Foot:	\$579
Square Footage:	1,122 Sqft
Lot Area:	0.06 Sqft
Year Built:	1977
View:	Mountain(s)
Bedrooms:	3
Bathrooms:	2
Bathrooms (Full):	2
Country:	US
State:	California
County:	Orange
City:	Brea
Zipcode:	92821
Listing ID:	PW25185986

## Features

✓ View:	City Lights, Neighborhood
Association:	1
Senior Community:	0
✓ Common Walls:	1 Common Wall, No One Above, No One Below
Stories:	1
✓ Community Features:	Sidewalks, Street Lights, Suburban, Park, Curbs, Gutters
✓ Pool:	In ground, Association, Community
✓ Amenities:	Pool, Spa/hot Tub, Clubhouse, Management, Maintenance Grounds
AttachedGarage :	1
✓ Parking:	2.00
✓ Parking:	Direct Garage Access, Garage
Spa:	1
✓ Fireplace:	Living room
✓ Lot Features:	Close To Clubhouse,

		Patio Home
✓	Fence:	Wood
✓	Patio:	Patio, Concrete, Enclosed
✓	Electric:	Standard
Entry Level:		<b>1</b>
✓	Laundry:	Individual Room, Inside, Washer Hookup, Gas & Electric Dryer Hookup
✓	Room Type:	Living Room, Walk-in Closet, Kitchen, Laundry, All Bedrooms Down, Primary Suite, Primary Bathroom, Primary Bedroom
✓	Roofing:	Shake, Wood
✓	Flooring:	Wood, Tile
✓	Entry Location	
✓	Spa Construction:	Community, In Ground, Association
✓	Foundation Details:	Slab
✓	Exterior Features:	Lighting, Rain Gutters
✓	Interior Features:	Built-in Features, High Ceilings, Open Floorplan, Pantry, Recessed Lighting, Granite Counters, Storage
Main Level Bathrooms:		<b>2</b>
Main Level Bedrooms:		<b>3</b>
✓	Heating System:	Central, Forced air
✓	Cooling System:	Central Air
✓	Utilities:	Electricity Available, Natural Gas Available, Water Available, Sewer Available
✓	Water Source:	Public
✓	Sewer:	

Public Sewer



Appliances:

Dishwasher, Disposal,  
Gas Range, Gas Oven,  
Range Hood, Vented  
Exhaust Fan, Water  
Heater

## MLS Addon

Association Fee  
Frequency: **Monthly**

Parcel Number: **31917130**

Lot Size Square  
Feet: **2,560 Sqft**

TaxAnnualAmou  
nt: **\$0**

Association Fee: **\$384**

✓ RoomKitchenFeatu  
res: **Granite Counters, Pots &  
Pan Drawers**

✓ RoomBathroomFeat  
ures: **Shower, Bathtub, Walk-in  
Shower, Exhaust Fan(s),  
Granite Counters,  
Shower In Tub, Privacy  
Toilet Door, Main Floor  
Full Bath**

Garage Spaces: **2**

High School: **Brea**

High School 2: **Brea**

Middle Or Junior  
School: **Brea**

Elementary  
School: **Fanning**

High School  
District: **Brea-Olinda Unified**

Levels: **One**

✓ EatingArea: **Area, Separated**

Lease Term : **12 Months**

Taxes: **\$0**

Guest House  
SqFt: **0 Sqft**

Approx Lot SqFt:

0 Sqft

✓

Special Listing  
Conditions:

Standard

Virtual Tour

URL Unbranded:

[Click Here](#)

Agent [Info](#)

---



Rina Maya

📞

858-876-7946

📞

800-878-0907

✉

Questions@unitedbrokersinc.net

-

---