

Residential Rent For Rent

2,276 Sqft - 10600 CostelloDrive, Tustin,
California, 92782



Basic Details

Status:	Active
Listing Type:	For Rent
Property Type:	Residential Rent
Property SubType:	Single Family Residence
Price:	\$5,900
Price Per Square Foot:	\$3
Square Footage:	2,276 Sqft
Lot Area:	0.12 Sqft
Year Built:	1993
View:	Mountain(s)
Bedrooms:	3
Bathrooms:	3
Bathrooms (Full):	2
Bathrooms (1/2):	1
Country:	US
State:	California
County:	Orange
City:	Tustin
Zipcode:	92782

Features

Association:	1
Senior Community:	0
✓ Common Walls:	No Common Walls
Stories:	2
✓ Community Features:	Sidewalks, Street Lights, Suburban, Curbs, Storm Drains
AttachedGarage :	1
✓ Parking:	3.00
✓ Parking:	Driveway, Direct Garage Access, Garage Door Opener, Garage - Two Door, Garage Faces Front
Spa:	0
✓ Fireplace:	Family room, Gas starter
✓ Lot Features:	Back Yard, Front Yard, Park Nearby, 0-1 Unit/acre, Sprinkler System, Yard, Sprinklers In Rear, Sprinklers In Front, Sprinklers Timer
✓ Fence:	Block
✓ Security:	Carbon monoxide

Listing ID:	OC25141610	detector(s), Security system, Smoke Detector(s)
✓	Patio:	Covered, Concrete, Front Porch
✓	Furnished:	Unfurnished
✓	Electric:	Photovoltaics Seller Owned
✓	Inclusions:	Two Tesla Chargers In The Garage. The Gardener Is Also Included.
Entry Level:		1
✓	Laundry:	Individual Room, Inside, Dryer Included, Washer Included
✓	Room Type:	Family Room, Formal Entry, Living Room, Separate Family Room, Walk-in Closet, Kitchen, Laundry, All Bedrooms Up, Walk-in Pantry, Entry, Utility Room, Jack & Jill, Primary Suite
✓	Flooring:	Wood
✓	Window Features:	Plantation Shutters, Screens, Blinds, Custom Covering, Skylight(s), Jalousies/louvered, Drapes, Roller Shields, Solar Screens
✓	Entry Location:	Driveway
✓	Property Condition:	Turnkey, Updated/remodeled
✓	Exterior Features:	Awning(s)
✓	Interior Features:	Open Floorplan, Pantry, Recessed Lighting, Stone Counters, Storage, Unfurnished, Quartz Counters
Main Level Bathrooms:		1
✓	Heating System:	Central, Solar

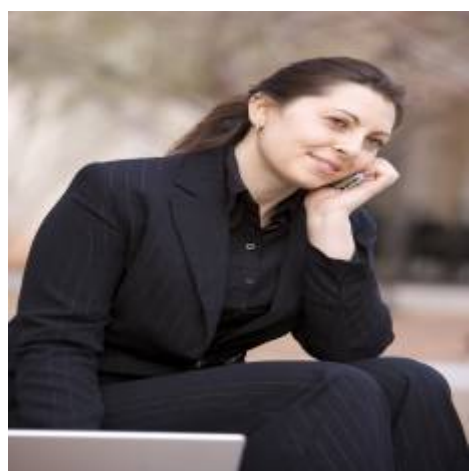
✓	Cooling System:	Central Air, Wall/window Unit(s)
✓	Utilities:	Sewer Connected, Water Connected, Cable Available, Electricity Connected, Natural Gas Connected, Underground Utilities
✓	Water Source:	Public
✓	Sewer:	Public Sewer
✓	Appliances:	Dishwasher, Microwave, Refrigerator, Water Line To Refrigerator

MLS Addon

Parcel Number:	52503223
Lot Size Square Feet:	5,300 Sqft
TaxAnnualAmount:	\$0
✓ RoomKitchenFeatures:	Kitchen Island, Quartz Counters, Remodeled Kitchen, Kitchen Open To Family Room
✓ RoomBathroomFeatures:	Remodeled, Upgraded, Double Sinks In Bath(s), Hollywood Bathroom (jack&jill), Double Sinks In Primary Bath
Garage Spaces:	3
High School:	Beckman
High School 2:	Beckma
Middle Or Junior School:	Pioneer
Elementary School:	Peters Canyon
High School District:	Tustin Unified
Levels:	Two
✓ EatingArea:	Dining Room, Breakfast Counter / Bar

Lease Term :	12 Months
Taxes:	\$0
Guest House SqFt:	0 Sqft
Approx Lot SqFt:	0 Sqft
<div>✓</div> Special Listing Conditions:	Standard

Agent [Info](#)



Rina Maya
☎ 858-876-7946
☎ 800-878-0907
✉ Questions@unitedbrokersinc.net

-
