

# Residential For Sale

1,102 Sqft - 1107 MemoryLane, Santa Ana,  
California, 92706



## Basic Details

Status:	Active
Listing Type:	For Sale
Property Type:	Residential
Property SubType:	Townhouse
Price:	\$580,000
Price Per Square Foot:	\$526
Square Footage:	1,102 Sqft
Lot Area:	3.40 Sqft
Year Built:	1962
View:	Mountain(s)
Bedrooms:	2
Bathrooms:	2
Bathrooms (Full):	1
Bathrooms (1/2):	1
Country:	US
State:	California
County:	Orange
City:	Santa Ana
Zipcode:	92706

## Features

✓ View:	Neighborhood, Trees/woods, Pool
Association:	1
Senior Community:	0
✓ Common Walls:	1 Common Wall, End Unit, No One Above, No One Below
Stories:	2
✓ Community Features:	Street Lights, Park, Curbs
✓ Pool:	In ground, Community
✓ Amenities:	Pool, Barbecue, Pets Permitted, Recreation Room, Controlled Access, Trash, Sewer, Water
✓ Parking:	0.00
✓ Parking:	Carport, Assigned
Spa:	0
✓ Fireplace:	Family room
✓ Lot Features:	0-1 Unit/acre
✓ Fence:	Wood
✓ Security:	Automatic gate, Gated

Listing ID:	PW25196467	community
✓	Patio:	Patio, Front Porch
Entry Level:		1
✓	Laundry:	Outside, Community
✓	Room Type:	Family Room, Formal Entry, Living Room, Kitchen, All Bedrooms Up, Entry, Primary Bedroom
✓	Roofing:	Tile
✓	Flooring:	Laminate
✓	Entry Location	
✓	Property Condition:	Turnkey
✓	Foundation Details:	Concrete Perimeter
✓	Interior Features:	Ceiling Fan(s), Unfurnished
Main Level Bathrooms:		1
Main Level Bedrooms:		2
✓	Heating System:	electric, Ductless
✓	Cooling System:	Wall/window Unit(s)
✓	Water Source:	Public
✓	Sewer:	Public Sewer
✓	Appliances:	Dishwasher, Disposal, Refrigerator, Electric Range
✓	Accessibility Features:	Parking

MLS [Addon](#)

Association Fee Frequency:	Monthly
Parcel Number:	93521051
Lot Size Square	148,023

Feet:

TaxAnnualAmount:	\$0
------------------	-----

Association Fee:	\$454
------------------	-------

✓ RoomKitchenFeatures:	Quartz Counters
✓ RoomBathroomFeatures:	Bathtub, Walk-in Shower, Shower In Tub, Vanity Area

High School:	Arlington
--------------	-----------

High School 2:	Arling
----------------	--------

Middle Or Junior School:	Miller
--------------------------	--------

High School District:	Santa Ana Unified
-----------------------	-------------------

Levels:	Two
---------	-----

✓ EatingArea:	Dining Room
---------------	-------------

Taxes:	\$0
--------	-----

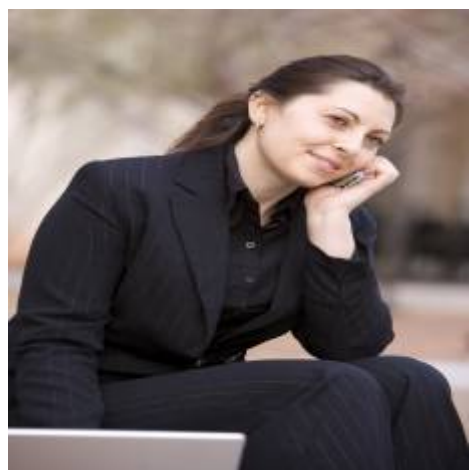
Guest House SqFt:	0
-------------------	---

Approx Lot SqFt:	0
------------------	---

✓ Special Listing Conditions:	Standard
-------------------------------	----------

Virtual Tour URL Unbranded:	<a href="#">Click Here</a>
-----------------------------	----------------------------

Agent [Info](#)



Rina Maya  
☎ 858-876-7946  
☎ 800-878-0907  
✉ [Questions@unitedbrokersinc.net](mailto:Questions@unitedbrokersinc.net)

---