

# Residential Rent For Rent

2,780 Sqft - 319 Sawbuck, Irvine, California,  
92618



## Basic Details

Status: **Active**

Listing Type: **For Rent**

Property Type: **Residential Rent**

Property SubType: **Condominium**

Price: **\$5,600**

Price Per Square Foot: **\$2**

Square Footage: **2,780 Sqft**

Lot Area: **0.32 Sqft**

Year Built: **2020**

View: **Mountain(s)**

Bedrooms: **3**

Bathrooms: **3**

Bathrooms (Full): **2**

Bathrooms (1/2): **1**

Country: **US**

State: **California**

County: **Orange**

City: **Irvine**

Zipcode: **92618**

## Features

✓ View: **Mountain(s), Neighborhood**

Association: **1**

Senior Community: **0**

✓ Common Walls: **No Common Walls**

Stories: **3**

✓ Pet Policy: **Call, Cats ok, Dogs ok**

✓ Community Features: **Sidewalks, Street Lights, Park**

✓ Pool: **Community**

✓ Amenities: **Pool, Spa/hot Tub, Clubhouse, Sport Court**

AttachedGarage : **1**

✓ Parking: **2.00**

✓ Parking: **Direct Garage Access, Garage Faces Side**

Spa: **1**

✓ Lot Features: **0-1 Unit/acre**

✓ Security: **Carbon monoxide detector(s), Smoke Detector(s)**

Listing ID:

**OC25200391**



Patio:

Roof Top, Patio Open



Furnished:

Unfurnished



Electric:

Standard

Entry Level:

**1**



Laundry:

Individual Room, Upper Level



Room Type:

Loft, Walk-in Closet, Kitchen, Laundry, All Bedrooms Up, Walk-in Pantry, Bonus Room



Flooring:

Wood, Carpet



Window Features:

Shutters



Entry Location:

2



Spa Construction:

Above Ground



Property Condition:

Turnkey



Interior Features:

Open Floorplan, Recessed Lighting, Balcony, Quartz Counters

Main Level

**1**

Bathrooms:



Heating System:

Central, Forced air



Cooling System:

Central Air



Utilities:

Electricity Available, Natural Gas Available, Sewer Connected, Water Available



Water Source:

Public



Sewer:

Public Sewer

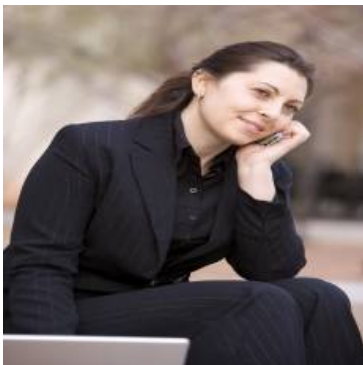


Appliances:

Dishwasher, Disposal, Microwave, Tankless Water Heater, Gas Cooktop, Vented Exhaust Fan, Electric Water Heater

Parcel Number:	<b>93015062</b>
Lot Size Square Feet:	<b>14,024 Sqft</b>
TaxAnnualAmount:	<b>\$0</b>
✓ RoomKitchenFeatures:	Quartz Counters, Walk-in Pantry
✓ RoomBathroomFeatures:	Walk-in Shower, Exhaust Fan(s), Shower In Tub, Double Sinks In Bath(s), Double Sinks In Primary Bath
Garage Spaces:	<b>2</b>
High School:	<b>Portola</b>
High School 2:	<b>Porto</b>
Middle Or Junior School:	<b>Miller</b>
High School District:	<b>Irvine Unified</b>
Levels:	<b>Three Or More</b>
✓ EatingArea:	Dining Room, Breakfast Counter / Bar
Lease Term :	<b>12 Months</b>
Taxes:	<b>\$0</b>
Guest House SqFt:	<b>0 Sqft</b>
Approx Lot SqFt:	<b>0 Sqft</b>
✓ Special Listing Conditions:	Standard

## Agent [Info](#)



Rina Maya  
 ☎ 858-876-7946  
 ☎ 800-878-0907  
 ✉ [Questions@unitedbrokersinc.net](mailto:Questions@unitedbrokersinc.net)

