

Residential Rent For Rent

1,100 Sqft - 13044 Pacific Promenade, Playa Vista,
California, 90094



Basic Details

Status:	Active
Listing Type:	For Rent
Property Type:	Residential Rent
Property SubType:	Condominium
Price:	\$5,500
Price Per Square Foot:	\$5
Square Footage:	1,100 Sqft
Lot Area:	1.84 Sqft
Year Built:	2004
View:	Mountain(s)
Bedrooms:	2
Bathrooms:	2
Bathrooms (Full):	2
Country:	US
State:	California
County:	Los Angeles
City:	Playa Vista
Zipcode:	90094
Listing ID:	SB25200408

Features

Association:	1
Senior Community:	0
✓ Common Walls:	1 Common Wall, End Unit
Stories:	3
✓ Pet Policy:	Call
✓ Community Features:	Sidewalks, Street Lights, Park, Curbs, Dog Park
✓ Pool:	Heated, Association, Community, Lap
✓ Amenities:	Pool, Spa/hot Tub, Tennis Court(s), Clubhouse, Guard, Barbecue, Sport Court, Gym/ex Room, Dog Park, Pickleball
AttachedGarage :	0
✓ Parking:	2.00
✓ Parking:	Controlled Entrance, Assigned, Side By Side, Subterranean
Spa:	1
✓ Furnished:	Furnished
Entry Level:	1

✓	Laundry:	Inside, Dryer Included, Washer Included, In Closet
✓	Room Type:	Living Room, Walk-in Closet, Laundry, Main Floor Bedroom, Main Floor Primary Bedroom, Primary Suite, Primary Bathroom, Primary Bedroom
✓	Entry Location	
✓	Spa Construction:	Community, Heated, Association
Main Level Bathrooms:		2
Main Level Bedrooms:		2
✓	Heating System:	Central
✓	Cooling System:	Central Air
✓	Water Source:	Public
✓	Sewer:	Public Sewer

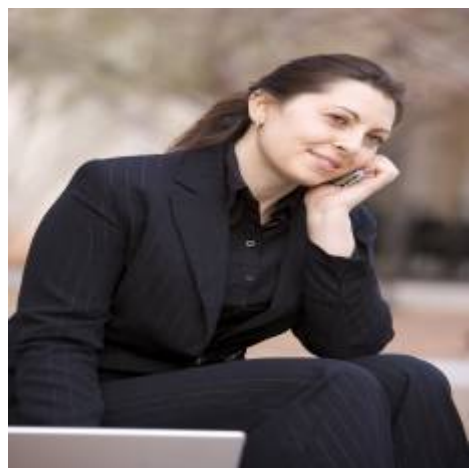
MLS Addon

Zoning:	LAR4(PV)
Parcel Number:	4211021196
Lot Size Square Feet:	80,281
TaxAnnualAmount:	\$0
Garage Spaces:	2
High School:	Arlington
High School 2:	Arling
Middle Or Junior School:	Miller
High School District:	Los Angeles Unified
Levels:	One
Lease Term :	6

**Months,Negotiable,
Short Term Lease**

Taxes:	\$0
Guest House SqFt:	0
Approx Lot SqFt:	0
✓ Special Listing Conditions:	Standard

Agent [Info](#)



Rina Maya
☎ 858-876-7946
☎ 800-878-0907
✉ Questions@unitedbrokersinc.net

-
