

Residential For Sale

1,602 Sqft - 173 Biome, Irvine, California, 92618



Basic Details

Status: **Active**

Listing Type: **For Sale**

Property Type: **Residential**

Property SubType: **Condominium**

Price: **\$1,330,000**

Price Per Square Foot: **\$830**

Square Footage: **1,602 Sqft**

Lot Area: **2,500 Sqft**

Year Built: **2023**

View: **Mountain(s)**

Bedrooms: **3**

Bathrooms: **2**

Bathrooms (Full): **2**

Country: **US**

State: **California**

County: **Orange**

City: **Irvine**

Zipcode: **92618**

Listing ID: **WS25125447**

Features

✓ View: **City Lights**

Association: **1**

Senior Community: **0**

✓ Common Walls: **2+ Common Walls**

Stories: **1**

✓ Community Features: **Sidewalks, Street Lights, Suburban, Park, Dog Park, Biking**

✓ Pool: **Association, Community**

✓ Amenities: **Spa/hot Tub, Clubhouse, Barbecue, Outdoor Cooking Area, Playground, Sport Court, Fire Pit, Biking Trails, Hiking Trails, Dog Park**

AttachedGarage : **1**

✓ Parking: **2.00**

✓ Parking: **Garage - Single Door, Garage Door Opener, Parking Space, Garage Faces Rear**

Spa: **1**

✓ Lot Features: **Back Yard, Front Yard, Close To Clubhouse, 0-1 Unit/acre, Landscaped,**

		Lawn, Corner Lot
✓	Fence:	Brick
✓	Security:	Smoke Detector(s), Fire Sprinkler System
✓	Patio:	Rear Porch
✓	Electric:	Standard
Entry Level:		1
✓	Laundry:	Inside, Washer Hookup, Gas & Electric Dryer Hookup, In Closet
✓	Room Type:	Family Room, Formal Entry, Living Room, Walk-in Closet, Kitchen, Laundry, Main Floor Bedroom, All Bedrooms Down, Entry, Main Floor Primary Bedroom, Primary Bathroom, Primary Bedroom
✓	Roofing:	Tile
✓	Flooring:	Vinyl, See Remarks
✓	Window Features:	Blinds, Jalousies/louvered
✓	Entry Location:	Front Door
✓	Spa Construction:	Community, Association
✓	Property Condition:	Building Permit
✓	Foundation Details:	See Remarks
✓	Interior Features:	Open Floorplan
Main Level Bathrooms:		2
Main Level Bedrooms:		3
✓	Heating System:	Central
✓	Cooling System:	Central Air
✓	Utilities:	Water Connected, Electricity Connected, Natural Gas Connected, Cable Connected

✓	Water Source:	Public
✓	Sewer:	Public Sewer
✓	Appliances:	Dishwasher, Disposal, Electric Oven, Microwave, Refrigerator, Gas Cooktop, Water Heater
✓	Accessibility Features:	See Remarks

MLS Addon

Association Fee Frequency:	Monthly
Parcel Number:	59168108
Lot Size Square Feet:	108,900,000
TaxAnnualAmount:	\$0
Association Fee 2:	\$237
Association Fee:	\$240
Association Fee 2 Frequency:	Monthly
✓ RoomKitchenFeatures:	Kitchen Island, Kitchen Open To Family Room
✓ RoomBathroomFeatures:	Shower, Bathtub, Exhaust Fan(s), Shower In Tub, Double Sinks In Bath(s), Main Floor Full Bath, Double Sinks In Primary Bath
Garage Spaces:	2
High School:	Portola
High School 2:	Porto
Middle Or Junior School:	Miller
High School District:	Irvine Unified
Levels:	One

✓ EatingArea:

In Living Room

Taxes:

\$0

Guest House
SqFt:

0

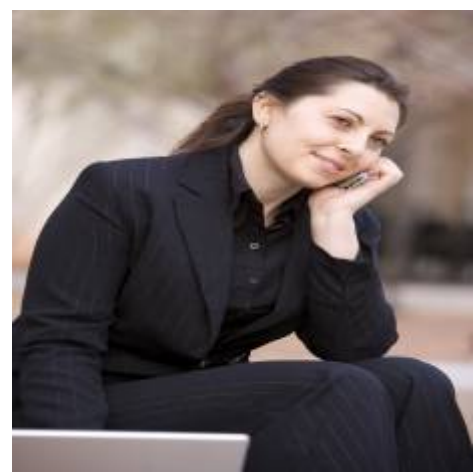
Approx Lot SqFt:

0

✓ Special Listing
Conditions:

Standard

Agent [Info](#)



Rina Maya

☎ 858-876-7946

☎ 800-878-0907

✉ Questions@unitedbrokersinc.net

-
