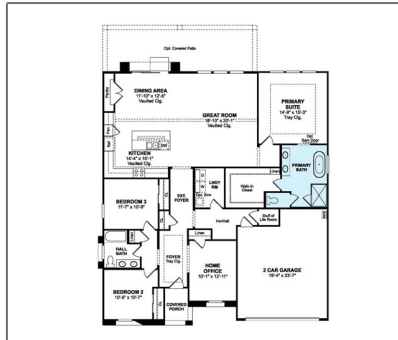


Residential For Sale

2,131 Sqft - 233 Carmelita Lane, Tehachapi,
California, 93561



Basic Details

Status: **Active**

Listing Type: **For Sale**

Property Type: **Residential**

Property SubType: **Single Family Residence**

Price: **\$599,990**

Price Per Square Foot: **\$282**

Square Footage: **2,131 Sqft**

Lot Area: **0.20 Sqft**

Year Built: **2025**

View: **Mountain(s)**

Bedrooms: **3**

Bathrooms: **2**

Bathrooms (Full): **2**

Country: **US**

State: **California**

County: **Kern**

City: **Tehachapi**

Features

✓ View: **Mountain(s)**

Association: **0**

Senior Community: **0**

✓ Common Walls: **No Common Walls**

Stories: **1**

✓ Community Features: **Sidewalks, Street Lights, Park**

Attached Garage: **1**

✓ Parking: **4.00**

✓ Parking: **Driveway, Direct Garage Access, Garage Door Opener, Garage, Garage Faces Front**

Spa: **0**

✓ Lot Features: **Sprinklers Drip System, Lot 6500-9999**

✓ Fence: **Vinyl**

✓ Security: **Smoke Detector(s), Fire Sprinkler System**

✓ Patio: **Front Porch**

Zipcode:	93561	✓	Electric:	Standard
Listing ID:	SW25141588	Entry Level: 1		
		✓	Laundry:	Gas Dryer Hookup, Individual Room, Inside, Washer Hookup
		✓	Room Type:	Office, Walk-in Closet, Kitchen, Laundry, Great Room, Entry, Foyer, Primary Suite
		✓	Roofing:	Tile
		✓	Flooring:	Carpet, Tile, Vinyl
		✓	Window Features:	Double Pane Windows, Screens
		✓	Entry Location:	Ground Level
		✓	Property Condition:	Under Construction
		✓	Foundation Details:	Slab
		✓	Interior Features:	High Ceilings, Open Floorplan, Pantry, Recessed Lighting, Cathedral Ceiling(s), Granite Counters, Storage, Quartz Counters
		Main Level Bathrooms: 2		
		Main Level Bedrooms: 3		
		✓	Heating System:	Central
		✓	Cooling System:	Central Air
		✓	Utilities:	Sewer Connected, Water Connected, Electricity Connected, Natural Gas Connected, Cable Connected
		✓	Water Source:	Public
		✓	Sewer:	Public Sewer
		✓	Appliances:	Dishwasher, Disposal, Gas Range, Microwave, Tankless Water Heater, Self Cleaning Oven, Water Line To

MLS Addon

Parcel Number:	41735102
Lot Size Square Feet:	8,610
Lot Size Dimensions:	9035
TaxAnnualAmount:	\$0
✓ RoomKitchenFeatures:	Granite Counters, Kitchen Island, Kitchen Open To Family Room
✓ RoomBathroomFeatures:	Shower, Separate Tub And Shower, Soaking Tub, Exhaust Fan(s), Shower In Tub, Low Flow Toilet(s), Privacy Toilet Door, Quartz Counters, Double Sinks In Primary Bath
Garage Spaces:	2
High School:	Arlington
High School 2:	Arling
Middle Or Junior School:	Miller
High School District:	See Remarks
Levels:	One
✓ EatingArea:	Area, Breakfast Counter / Bar
Taxes:	\$0
Guest House SqFt:	0
Approx Lot SqFt:	0
✓ Special Listing Conditions:	Standard



Rina Maya
☎ 858-876-7946
☎ 800-878-0907
✉ Questions@unitedbrokersinc.net