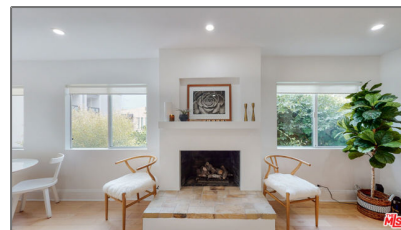
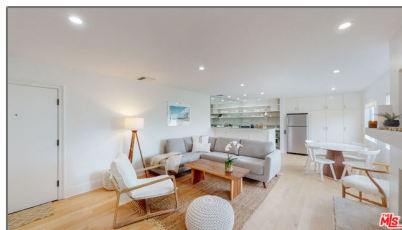
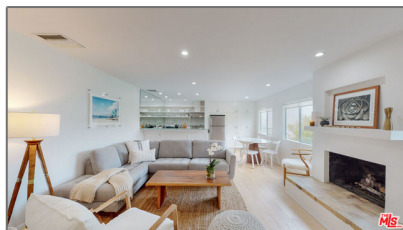


Residential For Sale

693 Sqft - 22626 Pacific Coast Highway, Malibu, California, 90265



Basic Details

Status: **Active**

Listing Type: **For Sale**

Property Type: **Residential**

Property SubType: **Condominium**

Price: **\$1,149,000**

Price Per Square Foot: **\$1,658**

Square Footage: **693 Sqft**

Lot Area: **0.89 Sqft**

Year Built: **1963**

View: **Mountain(s)**

Bedrooms: **1**

Bathrooms: **1**

Bathrooms (Full): **1**

Country: **US**

State: **California**

County: **Los Angeles**

City: **Malibu**

Zipcode: **90265**

Listing ID: **25588135**

Features

✓ View: **City Lights, Mountain(s), Ocean, Panoramic, Coastline, Water, White Water, Pier**

Association: **1**

Senior Community: **0**

✓ Common Walls: **1 Common Wall**

Stories: **2**

✓ Pool: **Private, Community**

✓ Amenities: **Pool, Controlled Access**

✓ Parking

✓ Parking: **Garage - Single Door, Covered, Private**

✓ Fireplace: **Living room**

✓ Security: **Card/code access, 24 hour security**

Entry Level: **2**

✓ Laundry: **Community**

✓ Room Type: **Living Room**

✓ Flooring: **Wood**

✓ Interior Features: **Open Floorplan, Recessed Lighting**

✓	Heating System:	Central
✓	Water Source:	Public
✓	Appliances:	Dishwasher, Disposal, Refrigerator, Range Hood, Range, Oven, Built-in

MLS Addon

Association Fee Frequency:	Monthly
Zoning:	LCC2*
Parcel Number:	4452003095
Lot Size Square Feet:	38,640 Sqft
TaxAnnualAmount:	\$0
Association Fee:	\$1,480
✓ RoomKitchenFeatures:	Stone Counters
✓ RoomBathroomFeatures:	Tile Counters
Garage Spaces:	1
High School:	Arlington
High School 2:	Arling
Middle Or Junior School:	Miller
High School District:	Santa Monica-Malibu Unified
Levels:	One
✓ EatingArea:	Dining Room, Breakfast Counter / Bar, In Living Room
Taxes:	\$0
Guest House SqFt:	0 Sqft
Approx Lot SqFt:	0 Sqft
✓ Special Listing Conditions:	Standard



Rina Maya
☎ 858-876-7946
☎ 800-878-0907
✉ Questions@unitedbrokersinc.net
