

Manufactured In Park For Sale

1,380 Sqft - 1030 Avenue, Palmdale, California, 93550



Basic Details

Status: **Active**

Listing Type: **For Sale**

Property Type: **Manufactured In Park**

Price: **\$220,000**

Price Per Square Foot: **\$159**

Square Footage: **1,380 Sqft**

Year Built: **2002**

View: **Mountain(s)**

Bedrooms: **3**

Bathrooms: **2**

Bathrooms (Full): **2**

Country: **US**

State: **California**

County: **Los Angeles**

City: **Palmdale**

Zipcode: **93550**

Listing ID: **SR25202082**

Features

Association: **0**

Senior Community: **0**

✓ Common Walls: **No Common Walls**

Stories: **1**

✓ Pet Policy: **Call**

✓ Community Features: **Sidewalks, Curbs**

✓ Pool: **Community**

✓ Parking: **2.00**

✓ Lot Features: **0-1 Unit/acre**

Entry Level: **1**

✓ Laundry: **Gas Dryer Hookup, Washer Hookup**

✓ Flooring: **Vinyl**

✓ Entry Location

✓ Heating System: **Central, natural gas**

✓ Cooling System: **Central Air**

✓ Water Source: **Public**

✓ Sewer:

Unknown



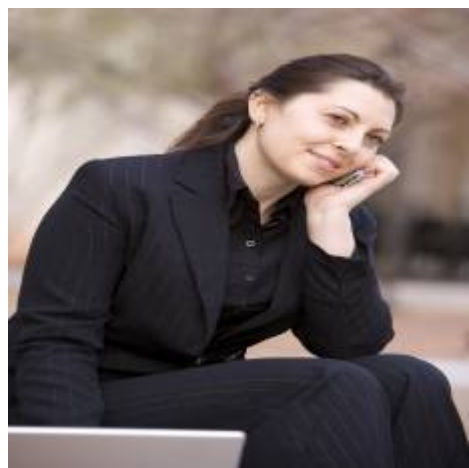
Appliances:

Dishwasher, Gas Range,
Microwave, Gas Oven

MLS [Addon](#)

Zoning:	LAR3
Parcel Number:	8950112108
TaxAnnualAmount:	\$0
High School:	Arlington
High School 2:	Arling
Middle Or Junior School:	Miller
High School District:	Antelope Valley Union
Levels:	One
Taxes:	\$0
Guest House SqFt:	0 Sqft
Approx Lot SqFt:	0 Sqft
<div><div>✓</div>Special Listing Conditions:</div>	Standard

Agent [Info](#)



Rina Maya
☎ 858-876-7946
☎ 800-878-0907
✉ Questions@unitedbrokersinc.net