

Manufactured In Park For Sale

784 Sqft - 29630 Highway 95, Blythe, California, 92225



Basic Details

Status: **Active**

Listing Type: **For Sale**

Property Type: **Manufactured In Park**

Price: **\$349,000**

Price Per Square Foot: **\$445**

Square Footage: **784 Sqft**

Lot Area: **26.89 Sqft**

Year Built: **1983**

View: **Mountain(s)**

Bedrooms: **2**

Bathrooms: **1**

Bathrooms (Full): **1**

Country: **US**

State: **California**

County: **Riverside**

City: **Blythe**

Zipcode: **92225**

Features

✓ View: **Desert, Water, River**

Association: **1**

Senior Community: **0**

Stories: **1**

✓ Community Features: **Watersports, Rural, Dog Park, Biking, Fishing, Blm/national Forest, Ravine**

✓ Amenities: **Trash, Sewer, Water**

✓ Parking: **3.00**

✓ Parking: **Attached Carport, Carport, Concrete, Boat**

✓ Lot Features: **Sprinklers In Front, 26-30 Units/acre**

✓ Security: **Fire and smoke detection system, Card/code access, Carbon monoxide detector(s), Security lights, Smoke Detector(s), Closed Circuit Camera(s)**

✓ Patio: **Deck, Covered, Wood**

✓ Electric: **Electricity - On Property,**



Water front
Features:

Fishing In Community,
Beach Access, Beach
Front, Navigable Water,
River Front

Listing ID:

FR25200644

Standard, 220 Volts, 220
Volts In Laundry

Entry Level:

1



Laundry:

Electric Dryer Hookup,
Inside, Washer Hookup,
Stackable, Dryer
Included, Washer
Included



Room Type:

Living Room, Great
Room, Main Floor
Bedroom, All Bedrooms
Down, Main Floor
Primary Bedroom



Roofing:

Composition



Flooring:

Laminate



Window Features:

Screens, Shutters,
Energy Star Qualified
Windows



Entry Location:

Level



Property Condition:

Turnkey,
Updated/remodeled



Foundation Details:

Pier Jacks



Exterior Features:

Awning(s)



Interior Features:

High Ceilings, Open
Floorplan, Cathedral
Ceiling(s), Ceiling Fan(s),
Granite Counters, Living
Room Deck Attached,
Storage, Furnished,
Home Automation
System



Heating System:

Heat Pump, Central,
High efficiency, Energy
Star Qualified Equipment



Cooling System:

High efficiency, Heat
pump, Central Air,
Energy Star Qualified
Equipment



Utilities:

Electricity Available,
Sewer Connected, Water
Available, Water
Connected, Electricity
Connected, Phone
Available, Propane,
Sewer Available

✓	Water Source:	Private
✓	Sewer:	Private Sewer, Cesspool
✓	Appliances:	Dishwasher, Disposal, Energy Star Qualified Water Heater, Gas Range, Microwave, Refrigerator, Gas Oven, Convection Oven, Range Hood, Vented Exhaust Fan, High Efficiency Water Heater, Free-standing Range, Water Softener, Water Heater, Energy Star Qualified Appliances, Electric Water Heater
✓	Accessibility Features:	Parking, 2+ Access Exits, No Interior Steps

MLS Addon

Association Fee Frequency:	Monthly
Parcel Number:	009618859
Lot Size Square Feet:	1,171,328 Sqft
TaxAnnualAmount:	\$0
Association Fee 2:	\$150
Association Fee:	\$550
Association Fee 2 Frequency:	Monthly
✓ RoomKitchenFeatures:	Granite Counters, Pots & Pan Drawers, Remodeled Kitchen, Self-closing Cabinet Doors, Kitchen Open To Family Room, Self-closing Drawers, Built-in Trash/recycling
✓ RoomBathroomFeatures:	Shower, Walk-in Shower, Granite Counters, Remodeled, Upgraded, Dual Shower Heads (or Multiple)
High School:	Arlington

High School 2: **Arling**

Middle Or Junior **Miller**
School:

High School **Palo Verde Unified**
District:

✓	EatingArea:	Dining Room, Breakfast Counter / Bar, Breakfast Nook, In Living Room
---	-------------	--

Taxes: **\$0**

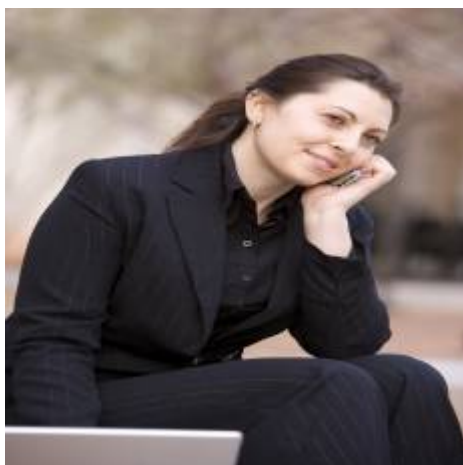
✓ OtherStructures: [Storage](#)

Guest House **0 Sqft**
SqFt:


Approx Lot SqFt: **0 Sqft**


✓ Special Listing Conditions: Standard

Agent Info



Rina Maya

 858-876-7946

 800-878-0907

✉ Questions@unitedbrokersinc.net