

Residential Rent For Rent

840 Sqft - 604 Cherry Avenue, Long Beach,
California, 90802



Basic Details

Status:	Active
Listing Type:	For Rent
Property Type:	Residential Rent
Property SubType:	Apartment
Price:	\$2,350
Price Per Square Foot:	\$3
Square Footage:	840 Sqft
Lot Area:	0.16 Sqft
Year Built:	1987
View:	Mountain(s)
Bedrooms:	2
Bathrooms:	2
Bathrooms (Full):	2
Country:	US
State:	California

Features

✓ View:	See Remarks
Association:	0
Senior Community:	0
✓ Common Walls:	2+ Common Walls
Stories:	3
✓ Community Features:	Curbs
AttachedGarage :	1
✓ Parking	
✓ Lot Features:	Landscaped
✓ Furnished:	Unfurnished
Entry Level:	1
✓ Laundry:	Common Area
✓ Room Type:	All Bedrooms Down
✓ Entry Location:	Third Floor

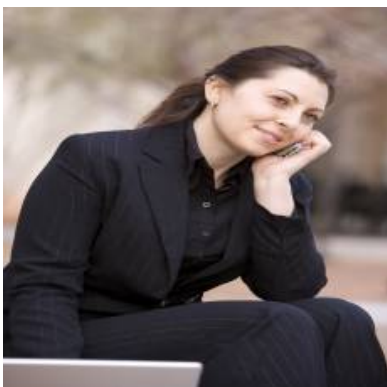
County:	Los Angeles
City:	Long Beach
Zipcode:	90802
Listing ID:	PW25201800

Main Level Bathrooms:	2
Main Level Bedrooms:	2
✓ Water Source:	Public
✓ Sewer:	Public Sewer

MLS [Addon](#)

Parcel Number:	7262025008
Lot Size Square Feet:	6,750 Sqft
TaxAnnualAmount:	\$0
Garage Spaces:	1
High School:	Arlington
High School 2:	Arling
Middle Or Junior School:	Miller
High School District:	Long Beach Unified
Levels:	One
Lease Term :	12 Months
Taxes:	\$0
Guest House SqFt:	0 Sqft
Approx Lot SqFt:	0 Sqft

Agent [Info](#)



Rina Maya
 ☎ 858-876-7946
 ☎ 800-878-0907
 ✉ Questions@unitedbrokersinc.net

