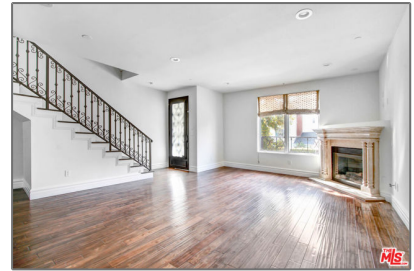


Residential Rent For Rent

1,946 Sqft - 1096 BedfordDrive, Los Angeles,
California, 90035



Basic Details

| | |
|------------------------|------------------|
| Status: | Active |
| Listing Type: | For Rent |
| Property Type: | Residential Rent |
| Property SubType: | Condominium |
| Price: | \$6,299 |
| Price Per Square Foot: | \$3 |
| Square Footage: | 1,946 Sqft |
| Lot Area: | 0.14 Sqft |
| Year Built: | 2007 |
| View: | Mountain(s) |
| Bedrooms: | 3 |
| Bathrooms: | 4 |
| Bathrooms (Full): | 3 |
| Bathrooms (1/2): | 1 |
| Country: | US |
| State: | California |
| County: | Los Angeles |
| City: | Los Angeles |
| Zipcode: | 90035 |

Features

| | |
|-----------------------|---|
| Association: | 0 |
| Senior Community: | 0 |
| Stories: | 0 |
| ✓ Pet Policy: | Call |
| ✓ Parking: | 2.00 |
| ✓ Parking: | Assigned |
| ✓ Fireplace: | Electric |
| ✓ Furnished: | Unfurnished |
| ✓ Room Type: | Family Room, Living Room |
| ✓ Flooring: | Wood |
| ✓ Property Condition: | Updated/remodeled |
| ✓ Heating System: | Central |
| ✓ Cooling System: | Central Air |
| ✓ Appliances: | Dishwasher, Disposal, Refrigerator, Gas Cooktop |

Listing ID:25589239

MLS [Addon](#)

| | |
|------------------------------------|---------------------------------------|
| Association Fee Frequency: | Monthly |
| Zoning: | LAR3 |
| Parcel Number: | 4330015046 |
| Lot Size Square Feet: | 6,206 |
| TaxAnnualAmount: | \$0 |
| High School: | Arlington |
| High School 2: | Arling |
| Middle Or Junior School: | Miller |
| High School District: | Los Angeles Unified |
| Levels: | Multi/Split |
| <div><div>✓</div>EatingArea:</div> | <div>In Kitchen, In Living Room</div> |
| Lease Term : | 12 Months |
| Taxes: | \$0 |
| Guest House SqFt: | 0 |
| Approx Lot SqFt: | 0 |

Agent [Info](#)



Rina Maya

858-876-7946

800-878-0907

Questions@unitedbrokersinc.net

