

Residential For Sale

2,515 Sqft - 35637 MeridiaAvenue, Palm Desert,
California, 92211



Basic Details

Status:	Active
Listing Type:	For Sale
Property Type:	Residential
Property SubType:	Single Family Residence
Price:	\$869,000
Price Per Square Foot:	\$346
Square Footage:	2,515 Sqft
Lot Area:	0.21 Sqft
Year Built:	2003
View:	Mountain(s)
Bedrooms:	3
Bathrooms:	3
Bathrooms (Full):	2
Bathrooms (3/4):	1
Country:	US
State:	California
County:	Riverside
City:	Palm Desert
Zipcode:	92211

Features

✓ View:	Mountain(s), Golf Course, Desert, Water
Association:	1
Senior Community:	1
✓ Common Walls:	No Common Walls
Stories:	1
✓ Community Features:	Sidewalks, Street Lights, Golf, Hiking, Park, Watersports, Curbs, Mountainous, Biking, Storm Drains, Lake
✓ Pool:	Exercise pool, Community, Lap
✓ Amenities:	Pool, Spa/hot Tub, Tennis Court(s), Clubhouse, Meeting Room, Barbecue, Outdoor Cooking Area, Playground, Fire Pit, Bocce Ball Court, Gym/ex Room, Cable Tv, Pets Permitted, Billiard Room, Banquet Facilities, Golf Course, Biking Trails, Security, Other Courts, Paddle Tennis, Pest Control, Racquetball, Pickleball, Jogging Track
AttachedGarage :	1

Listing ID:	AR25147831	
✓	Parking:	3.00
✓	Parking:	Gated, Garage Door Opener, Garage - Two Door, Golf Cart Garage, Oversized
	Spa:	0
✓	Lot Features:	Back Yard, Front Yard, Close To Clubhouse, Landscaped, Yard, Desert Back, On Golf Course, Patio Home
✓	Fence:	Wrought iron
✓	Security:	Gated community, Gated with guard, 24 hour security, Gated With Attendant
✓	Patio:	Covered, Patio, Patio Open, Concrete, Front Porch, Rear Porch
	Entry Level:	1
✓	Laundry:	Inside
✓	Room Type:	Family Room, Living Room, Office, Walk-in Closet, Kitchen, Laundry, Main Floor Bedroom, All Bedrooms Down, Entry, Main Floor Primary Bedroom, Primary Suite, Primary Bathroom, Primary Bedroom, Two Primaries
✓	Window Features:	Double Pane Windows, Blinds
✓	Entry Location:	Ground Floor
✓	Exterior Features:	Lighting
✓	Interior Features:	High Ceilings, Pantry, Recessed Lighting, Ceiling Fan(s), Granite Counters
	Main Level Bathrooms:	3
	Main Level Bedrooms:	3

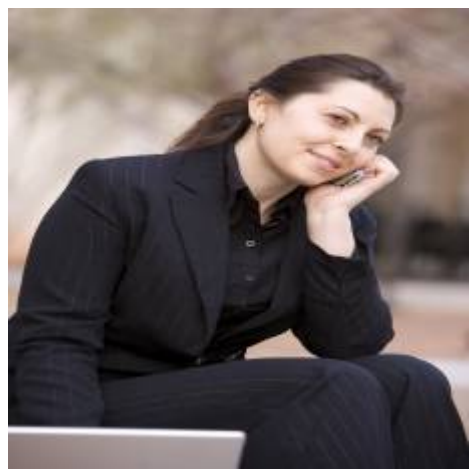
✓	Heating System:	Central
✓	Cooling System:	Dual, Central Air
✓	Utilities:	Electricity Available, Sewer Connected, Water Connected, Cable Available, Cable Connected
✓	Water Source:	Public
✓	Sewer:	Public Sewer
✓	Appliances:	Disposal, Double Oven, Gas Water Heater, Microwave, Refrigerator, Barbecue, Gas Cooktop, Water Line To Refrigerator
✓	Accessibility Features:	No Interior Steps, Grab Bars In Bathroom(s)

MLS Addon

Association Fee Frequency:	Monthly
Zoning:	SP ZONE
Parcel Number:	752080030
Lot Size Square Feet:	9,148
Tax Annual Amount:	\$0
Association Fee:	\$432
✓ Room Kitchen Features:	Granite Counters, Kitchen Island, Kitchen Open To Family Room
✓ Room Bathroom Features:	Shower, Bathtub, Closet In Bathroom, Separate Tub And Shower, Soaking Tub, Walk-in Shower, Exhaust Fan(s), Privacy Toilet Door, Main Floor Full Bath, Double Sinks In Primary Bath
Garage Spaces:	3
High School:	Arlington

High School 2:	Arling
Middle Or Junior School:	Miller
High School District:	Desert Sands Unified
Levels:	One
<input checked="" type="checkbox"/> EatingArea:	Dining Room, In Kitchen, Breakfast Counter / Bar
Taxes:	\$0
Guest House SqFt:	0
Approx Lot SqFt:	0
<input checked="" type="checkbox"/> Special Listing Conditions:	Standard
Virtual Tour URL Unbranded:	Click Here

Agent [Info](#)



Rina Maya
 858-876-7946
 800-878-0907
 Questions@unitedbrokersinc.net
