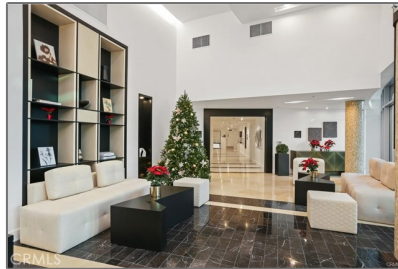


# Residential Rent For Rent

2,063 Sqft - 3131 Michelson Drive, Irvine,  
California, 92612



## Basic Details

Status: **Active**

Listing Type: **For Rent**

Property Type: **Residential Rent**

Property SubType: **Condominium**

Price: **\$9,000**

Price Per Square Foot: **\$4**

Square Footage: **2,063 Sqft**

Year Built: **2006**

View: **Mountain(s)**

Bedrooms: **3**

Bathrooms: **3**

Bathrooms (Full): **2**

Country: **US**

State: **California**

County: **Orange**

City: **Irvine**

Zipcode: **92612**

## Features

✓ View: **City Lights, Mountain(s), Neighborhood, Hills, Park/greenbelt**

Association: **1**

Senior Community: **0**

✓ Common Walls: **2+ Common Walls**

Stories: **1**

✓ Community Features: **Street Lights, Park, Urban**

✓ Pool: **Heated, Association, Community**

✓ Amenities: **Pool, Spa/hot Tub, Clubhouse, Guard, Gym/ex Room, Billiard Room, Maintenance Front Yard**

AttachedGarage : **0**

✓ Parking: **2.00**

✓ Parking: **Covered, Assigned**

Spa: **1**

Listing ID:

**LG25207999**

✓	Fireplace:	Living room
✓	Lot Features:	0-1 Unit/acre
✓	Security:	Fire and smoke detection system, Gated community, Gated with guard, 24 hour security, Smoke Detector(s), Gated With Attendant, Fire Sprinkler System
✓	Patio:	Patio
✓	Furnished:	Furnished

Entry Level: **1**

✓	Laundry:	Inside, Dryer Included, Washer Included, In Closet
✓	Room Type:	Living Room, Walk-in Closet, Kitchen, Laundry, Main Floor Bedroom, Main Floor Primary Bedroom, Primary Suite, Primary Bathroom, Primary Bedroom
✓	Flooring:	Laminate
✓	Window Features:	Blinds
✓	Entry Location:	Upstairs Unit
✓	Spa Construction:	Community, In Ground, Association
✓	Interior Features:	Open Floorplan, Balcony, Granite Counters, Living Room Balcony, Trash Chute

Main Level Bathrooms: **2**

Main Level Bedrooms: **3**

✓	Heating System:	Central
✓	Cooling System:	Central Air
✓	Utilities:	Sewer Connected, Water Connected, Electricity Connected, Natural Gas Connected

✓	Water Source:	Public
✓	Sewer:	Public Sewer
✓	Appliances:	Dishwasher, Disposal, Built-in Range, Microwave, Refrigerator, Gas Oven, Self Cleaning Oven, Gas Cooktop, Ice Maker, Freezer
✓	Accessibility Features:	No Interior Steps

## MLS Addon

Association Fee Frequency: **Monthly**

Parcel Number: **93410832**

TaxAnnualAmount: **\$0**

✓	RoomKitchenFeatures:	Granite Counters, Kitchen Island, Kitchen Open To Family Room
✓	RoomBathroomFeatures:	Shower, Bathtub, Separate Tub And Shower, Walk-in Shower, Exhaust Fan(s), Granite Counters, Shower In Tub, Main Floor Full Bath, Double Sinks In Primary Bath

Garage Spaces: **2**

High School: **Arlington**

High School 2: **Arling**

Middle Or Junior School: **Miller**

High School District: **Santa Ana Unified**

Levels: **One**

✓	EatingArea:	Area, Breakfast Counter / Bar, Breakfast Nook
---	-------------	---

Lease Term : **12 Months**

Taxes: **\$0**

Guest House  
SqFt: 0




Approx Lot SqFt: 0

☒ Special Listing  
Conditions: [Standard](#)

Agent [Info](#)

---



Rina Maya  
 858-876-7946  
 800-878-0907  
 [Questions@unitedbrokersinc.net](mailto:Questions@unitedbrokersinc.net)

-

---