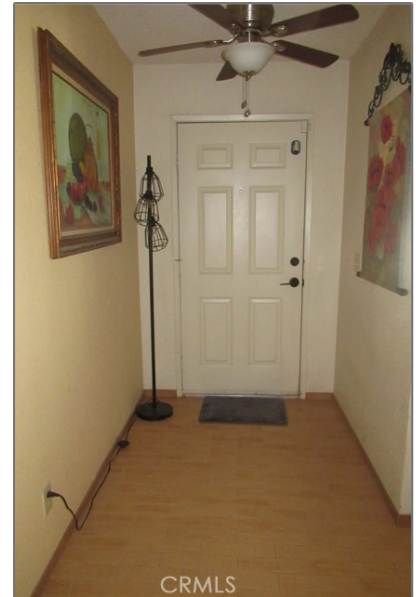


# Residential For Sale

1,618 Sqft - 14216 Rivers Edge Road, Helendale,  
California, 92342



## Basic Details

Status:	Active
Listing Type:	For Sale
Property Type:	Residential
Property SubType:	Single Family Residence
Price:	\$340,000
Price Per Square Foot:	\$210
Square Footage:	1,618 Sqft
Lot Area:	0.19 Sqft
Year Built:	1990
View:	Mountain(s)
Bedrooms:	3
Bathrooms:	2
Bathrooms (Full):	2
Country:	US

## Features

✓ View:	Neighborhood
Association:	1
Senior Community:	0
✓ Common Walls:	No Common Walls
Stories:	1
✓ Community Features:	Suburban
✓ Pool:	Association
✓ Amenities:	Pool, Spa/hot Tub, Tennis Court(s), Clubhouse, Management, Barbecue, Picnic Area, Playground, Bocce Ball Court, Gym/ex Room, Banquet Facilities, Golf Course, Other Courts, Dock, Dog Park, Racquetball, Pickleball
AttachedGarage :	1

State:	California
County:	San Bernardino
City:	Helendale
Zipcode:	92342
<div><div>✓</div>Water front Features:</div>	Lake Privileges
Listing ID:	HD25203359

<div><div>✓</div>Parking:</div>	2.00
Spa:	1
<div><div>✓</div>Fireplace:</div>	Living room
<div><div>✓</div>Lot Features:</div>	Lot 6500-9999
<div><div>✓</div>Fence:</div>	Wrought iron, Block
<div><div>✓</div>Patio:</div>	Patio, Concrete
<div><div>✓</div>Laundry:</div>	In Garage
<div><div>✓</div>Room Type:</div>	All Bedrooms Down
<div><div>✓</div>Roofing:</div>	Tile
<div><div>✓</div>Flooring:</div>	Tile
<div><div>✓</div>Entry Location:</div>	First
<div><div>✓</div>Spa Construction:</div>	Association

Main Level Bathrooms:	2
-----------------------	---

Main Level Bedrooms:	3
----------------------	---

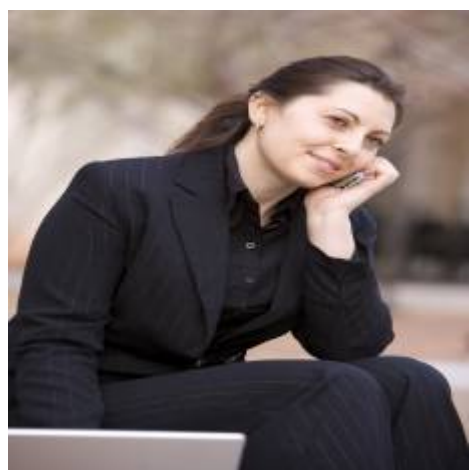
<div><div>✓</div>Heating System:</div>	Central
<div><div>✓</div>Cooling System:</div>	Central Air
<div><div>✓</div>Water Source:</div>	Public
<div><div>✓</div>Sewer:</div>	Public Sewer
<div><div>✓</div>Appliances:</div>	Dishwasher, Disposal, Gas Range, Microwave, Gas Oven

MLS Addon

Association Fee Frequency:	Monthly
Zoning:	RS
Parcel Number:	0465263050000
Lot Size Square Feet:	8,210 Sqft

TaxAnnualAmount:	\$0
Association Fee:	\$235
Garage Spaces:	2
High School:	Arlington
High School 2:	Arling
Middle Or Junior School:	Miller
High School District:	Victor Valley Unified
Levels:	One
Taxes:	\$0
Guest House SqFt:	0 Sqft
Approx Lot SqFt:	0 Sqft
<input checked="" type="checkbox"/> Special Listing Conditions:	Standard

Agent [Info](#)



Rina Maya  
 858-876-7946  
 800-878-0907  
 [Questions@unitedbrokersinc.net](mailto:Questions@unitedbrokersinc.net)