

Residential For Sale

821 Sqft - 3680 BearStreet, Santa Ana, California,
92704



Basic Details

Status: **Active**

Listing Type: **For Sale**

Property Type: **Residential**

Property SubType: **Condominium**

Price: **\$399,800**

Price Per Square Foot: **\$487**

Square Footage: **821 Sqft**

Lot Area: **1.82 Sqft**

Year Built: **1984**

View: **Mountain(s)**

Bedrooms: **1**

Bathrooms: **1**

Bathrooms (Full): **1**

Country: **US**

State: **California**

County: **Orange**

City: **Santa Ana**

Zipcode: **92704**

Features

✓ View: **Neighborhood**

Association: **1**

Senior Community: **0**

✓ Common Walls: **1 Common Wall**

Stories: **1**

✓ Community Features: **Park, Dog Park, Urban**

✓ Pool: **In ground, Association, Community**

✓ Amenities: **Pool, Spa/hot Tub, Controlled Access, Trash, Security, Maintenance Front Yard**

AttachedGarage : **1**

✓ Parking: **2.00**

✓ Parking: **Garage, Guest, Assigned, On Site, Permit Required**

Spa: **1**

✓ Fireplace: **Living room**

✓ Lot Features: **Landscaped**

✓ Security:

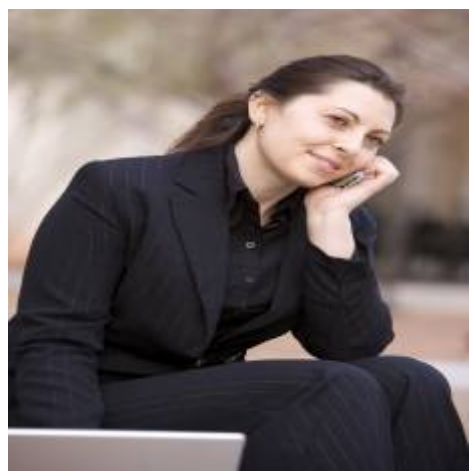
Listing ID:	IV25202985		
		Gated community	
	✓	Patio:	Covered, Patio, Front Porch, Terrace
Entry Level:		1	
	✓	Laundry:	Inside
	✓	Room Type:	Living Room, Office, All Bedrooms Up, Jack & Jill
	✓	Flooring:	Tile, Laminate
	✓	Window Features:	Shutters
	✓	Entry Location:	Patio
	✓	Spa Construction:	Community, In Ground, Association
	✓	Property Condition:	Turnkey
	✓	Interior Features:	High Ceilings, Open Floorplan, Balcony, Cathedral Ceiling(s)
Main Level Bathrooms:		1	
Main Level Bedrooms:		1	
	✓	Cooling System:	Central Air
	✓	Utilities:	Water Connected, Electricity Connected
	✓	Water Source:	Public
	✓	Sewer:	Public Sewer
	✓	Appliances:	Dishwasher, Gas Range

MLS Addon

Association Fee Frequency:	Monthly
Parcel Number:	93116641
Lot Size Square Feet:	79,481
TaxAnnualAmou	\$0

nt:	
Association Fee:	\$472
✓ RoomKitchenFeatures:	Tile Counters
✓ RoomBathroomFeatures:	Bathtub, Shower In Tub
Garage Spaces:	1
High School:	Arlington
High School 2:	Arling
Middle Or Junior School:	Miller
High School District:	Santa Ana Unified
Levels:	One
✓ EatingArea:	Dining Room
Taxes:	\$0
Guest House SqFt:	0
Approx Lot SqFt:	0
✓ Special Listing Conditions:	Standard

Agent [Info](#)



Rina Maya
☎ 858-876-7946
☎ 800-878-0907
✉ Questions@unitedbrokersinc.net