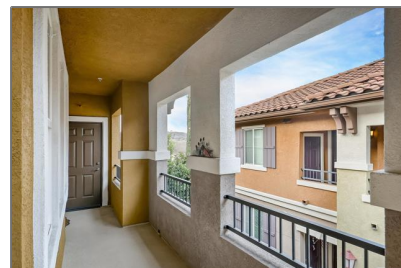


Residential For Sale

1,015 Sqft - 36 Via Sovana, Santee, California,
92071



Basic Details

Status: **Active**

Listing Type: **For Sale**

Property Type: **Residential**

Property SubType: **Condominium**

Price: **\$565,000**

Price Per Square Foot: **\$557**

Square Footage: **1,015 Sqft**

Lot Area: **8.08 Sqft**

Year Built: **2007**

View: **Mountain(s)**

Bedrooms: **2**

Bathrooms: **2**

Bathrooms (Full): **2**

State: **California**

County: **San Diego**

City: **Santee**

Zipcode: **92071**

Listing ID: **PTP2506883**

Features

✓ View: **Neighborhood, Valley**

Association: **1**

Senior Community: **0**

✓ Common Walls: **1 Common Wall, No One Above**

Stories: **1**

✓ Community Features: **Sidewalks, Curbs, Gutters**

✓ Pool: **In ground, Association, Community**

✓ Amenities: **Pool, Spa/hot Tub, Clubhouse, Barbecue, Maintenance Grounds, Sewer, Pest Control**

AttachedGarage : **1**

✓ Parking: **2.00**

Spa: **0**

✓ Inclusions: **N/a, Solar**

Entry Level: **2**

✓ Laundry: **Inside, Dryer Included, Washer Included, In Kitchen, In Closet**

✓	Room Type:	Living Room, Walk-in Closet, Kitchen, Laundry, Primary Suite
✓	Entry Location:	2
Main Level Bathrooms:		2
Main Level Bedrooms:		2
✓	Cooling System:	Electric, Central Air
✓	Sewer:	Public Sewer

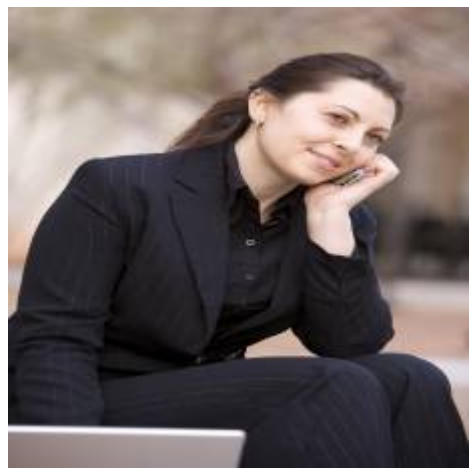
MLS [Addon](#)

Association Fee Frequency:	Monthly
Zoning:	Residential
Parcel Number:	3830611108
Lot Size Square Feet:	351,964.80 Sqft
TaxAnnualAmount:	\$0
Association Fee:	\$324
Garage Spaces:	1
High School:	Arlington
High School 2:	Arling
Middle Or Junior School:	Miller
High School District:	Grossmont Union
Levels:	One
Taxes:	\$0
Guest House SqFt:	0 Sqft
Approx Lot SqFt:	0 Sqft
✓ Special Listing Conditions:	Standard

Virtual Tour [Click Here](#)

URL Unbranded:

Agent [Info](#)



Rina Maya
☎ 858-876-7946
☎ 800-878-0907
✉ Questions@unitedbrokersinc.net

-
