

Residential For Sale

1,004 Sqft - 1420 Hilltop Drive, Chula Vista,
California, 91911



Basic Details

Status:	Active
Listing Type:	For Sale
Property Type:	Residential
Property SubType:	Condominium
Price:	\$455,000
Price Per Square Foot:	\$453
Square Footage:	1,004 Sqft
Year Built:	1971
View:	Mountain(s)
Bedrooms:	2
Bathrooms:	2
Bathrooms (Full):	2
State:	California
County:	San Diego
City:	Chula Vista
Zipcode:	91911
Listing ID:	NDP2508949

Features

✓ View:	Pool
Association:	1
Senior Community:	0
✓ Common Walls:	End Unit, No One Below
Stories:	1
✓ Community Features:	Sidewalks
✓ Pool:	In ground, Association, Community
✓ Amenities:	Pool, Hot Water
Attached Garage :	0
✓ Parking:	2.00
✓ Parking:	Gated, Paved, Guest, Uncovered, Off Street, Parking Space, Private, Assigned, Pull-through
Spa:	0
Entry Level:	1
✓ Laundry:	Stackable, In Closet
✓ Room Type:	Living Room, Kitchen, Laundry, Main Floor Bedroom, All Bedrooms

		Down, Main Floor Primary Bedroom, Primary Bathroom, Primary Bedroom
✓	Entry Location:	Front Doo
✓	Property Condition:	Repairs Cosmetic
Main Level Bathrooms:		2
Main Level Bedrooms:		2
✓	Sewer:	Public Sewer
✓	Accessibility Features:	Parking, No Interior Steps, Grab Bars In Bathroom(s), Entry Slope Less Than 1 Foot, Disability Features

MLS Addon

Association Fee Frequency:	Monthly
Zoning:	Residential
Parcel Number:	6230721325
✓ Exclusions	
TaxAnnualAmou nt:	\$0
Association Fee:	\$600
High School:	Castle Park Senior
High School 2:	Cpshs
Middle Or Junior School:	Castle Park
Elementary School:	Loma Verde
High School District:	Sweetwater Union
Levels:	One
Taxes:	\$0
Guest House SqFt:	0

Approx Lot SqFt: 0

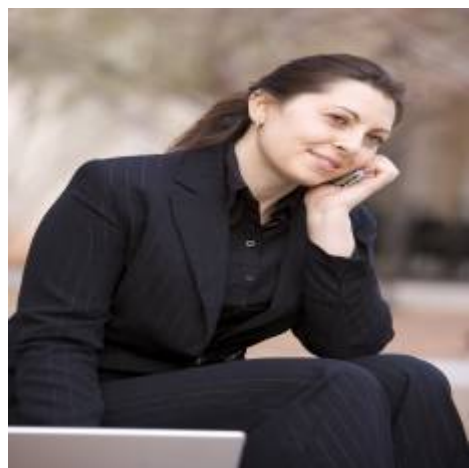
✓

Special Listing
Conditions:

Standard

Virtual Tour [Click Here](#)
URL Unbranded:

Agent [Info](#)



Rina Maya
☎ 858-876-7946
☎ 800-878-0907
✉ Questions@unitedbrokersinc.net

-
