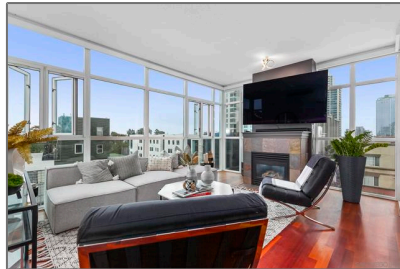
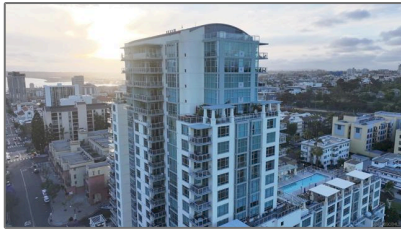


Residential For Sale

1,285 Sqft - 850 Beech St, San Diego, California, 92101



Basic Details

Status:	Active
Listing Type:	For Sale
Property Type:	Residential
Property SubType:	Condominium
Price:	\$870,000
Price Per Square Foot:	\$677
Square Footage:	1,285 Sqft
Lot Area:	0.92 Sqft
Year Built:	2003
View:	Mountain(s)
Bedrooms:	3
Bathrooms:	2
Bathrooms (Full):	2
Country:	US
State:	California
County:	San Diego
City:	San Diego
Zipcode:	92101
Listing ID:	250038696SD

Features

Association:	1
Senior Community:	0
Stories:	1
✓ Pool:	Heated, In ground, Community, Gas Heat, Lap
✓ Amenities:	Maintenance Grounds, Trash, Sewer, Hot Water, Gas, Clubhouse Paid
✓ Parking:	2.00
✓ Parking:	Garage Door Opener, Assigned, Community Structure
Spa:	0
✓ Fireplace:	Family room
Entry Level:	5
✓ Laundry:	Gas Dryer Hookup
✓ Room Type:	Sauna, Walk-in Closet, Main Floor Bedroom, Recreation, Exercise Room
✓ Roofing:	Common roof
✓ Property Condition:	Repairs Cosmetic

✓	Heating System:	Heat Pump, natural gas
✓	Cooling System:	Central Air
✓	Appliances:	Dishwasher, Disposal, Counter Top, 6 Burner Stove, Refrigerator, Gas Oven, Convection Oven, Gas Cooking, Indoor Grill, Freezer

MLS [Addon](#)

Association Fee Frequency:	Monthly
Zoning:	CCPE-RE
Parcel Number:	5340241847
Lot Size Square Feet:	40,052 Sqft
TaxAnnualAmount:	\$0
Association Fee:	\$1,189
Garage Spaces:	2
High School:	Arlington
High School 2:	Arling
Middle Or Junior School:	Miller
Levels:	One
Taxes:	\$0
Guest House SqFt:	0 Sqft
Approx Lot SqFt:	0 Sqft
Virtual Tour URL Unbranded:	Click Here

Agent [Info](#)



Rina Maya

☎ 858-876-7946

☎ 800-878-0907

✉ Questions@unitedbrokersinc.net
