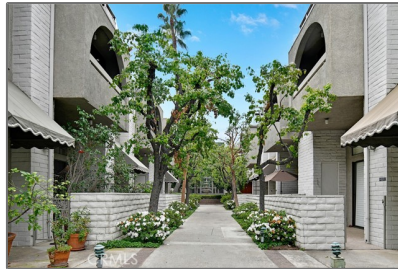


# Residential For Sale

2,075 Sqft - 5335 White Oak Avenue, Encino,  
California, 91316



## Basic Details

Status:	Active
Listing Type:	For Sale
Property Type:	Residential
Property SubType:	Townhouse
Price:	\$839,000
Price Per Square Foot:	\$404
Square Footage:	2,075 Sqft
Lot Area:	5.05 Sqft
Year Built:	1973
View:	Mountain(s)
Bedrooms:	3
Bathrooms:	3
Bathrooms (Full):	2
Bathrooms (1/2):	1
Country:	US
State:	California
County:	Los Angeles
City:	Encino
Zipcode:	91316

## Features

Association:	1
Senior Community:	0
✓ Common Walls:	2+ Common Walls, No One Above, No One Below
Stories:	2
✓ Community Features:	Hiking, Dog Park, Biking
✓ Pool:	Association, Community
✓ Amenities:	Pool, Spa/hot Tub, Clubhouse, Barbecue, Sauna
AttachedGarage :	1
✓ Parking:	2.00
✓ Parking:	Garage - Single Door, Garage, Assigned, Garage Faces Rear
Spa:	1
✓ Fireplace:	Family room
✓ Lot Features:	Landscaped, 2-5 Units/acre, Garden
✓ Security:	Automatic gate, Gated community, Carbon monoxide detector(s),





Listing ID:	SR25191623	
		Smoke Detector(s)
	✓	Patio:
		Patio, Patio Open, Concrete
	Entry Level: 1	
	✓	Laundry:
		In Garage, Dryer Included, Washer Included
	✓	Room Type:
		Family Room, Walk-in Closet, Kitchen, All Bedrooms Up, Entry, Galley Kitchen, Foyer, Primary Suite, Primary Bathroom, Primary Bedroom
	✓	Roofing:
		Composition
	✓	Flooring:
		Wood, Tile
	✓	Entry Location:
		Front
	✓	Spa Construction:
		Community, Association
	✓	Foundation Details:
		Slab
	✓	Interior Features:
		High Ceilings, Recessed Lighting, Cathedral Ceiling(s), Granite Counters, Copper Plumbing Full, Bar
	Main Level 1	
	Bathrooms:	
	✓	Heating System:
		Central
	✓	Cooling System:
		Electric, Central Air
	✓	Utilities:
		Sewer Connected, Water Connected, Electricity Connected, Natural Gas Connected, Phone Available, Cable Connected
	✓	Water Source:
		Public
	✓	Sewer:
		Public Sewer
	✓	Appliances:
		Dishwasher, Disposal, Gas Range, Microwave, Refrigerator, Electric Cooktop, Water Heater

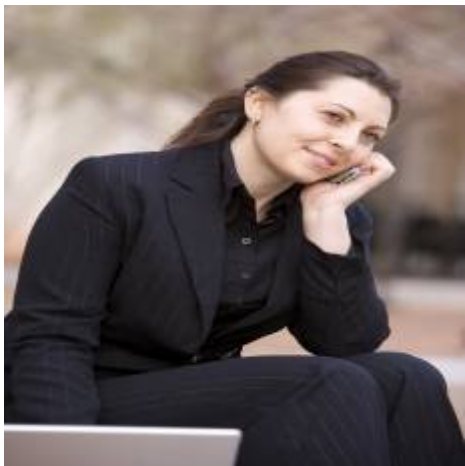


Accessibility  
Features:

Parking

MLS [Addon](#)

Association Fee Frequency:	Monthly	
Zoning:	LAR3	
Parcel Number:	2162014015	
Lot Size Square Feet:	219,797	
TaxAnnualAmount:	\$0	
Association Fee:	\$834	
 RoomKitchenFeatures:	Granite Counters, Kitchen Island, Remodeled Kitchen	
 RoomBathroomFeatures:	Shower, Bathtub, Closet In Bathroom, Soaking Tub, Walk-in Shower, Exhaust Fan(s), Granite Counters, Remodeled, Upgraded, Humidity Controlled	
Garage Spaces:	2	
High School:	Arlington	
High School 2:	Arling	
Middle Or Junior School:	Miller	
High School District:	Los Angeles Unified	
Levels:	Two,Multi/Split	
 EatingArea:	Dining Room, In Kitchen, Separated	
Taxes:	\$0	
Guest House SqFt:	0	
Approx Lot SqFt:	0	
 Special Listing Conditions:	Standard, Trust	



Rina Maya  
☎ 858-876-7946  
☎ 800-878-0907  
✉ [Questions@unitedbrokersinc.net](mailto:Questions@unitedbrokersinc.net)