

# Residential For Sale

1,338 Sqft - 1563 LimaWay, Placentia, California,  
92870



## Basic Details

Status: **Active**

Listing Type: **For Sale**

Property Type: **Residential**

Property SubType: **Townhouse**

Price: **\$797,000**

Price Per Square Foot: **\$596**

Square Footage: **1,338 Sqft**

Lot Area: **5.10 Sqft**

Year Built: **2023**

View: **Mountain(s)**

Bedrooms: **3**

Bathrooms: **3**

Bathrooms (Full): **2**

Bathrooms (1/2): **1**

Country: **US**

State: **California**

County: **Orange**

City: **Placentia**

Zipcode: **92870**

## Features

✓ View: **Mountain(s),  
Neighborhood**

Association: **1**

Senior Community: **0**

✓ Common Walls: **1 Common Wall**

Stories: **3**

✓ Community Features: **Park**

✓ Amenities: **Barbecue, Playground,  
Fire Pit, Dog Park,  
Pickleball**

AttachedGarage : **1**

✓ Parking: **2.00**

✓ Parking: **Garage - Single Door,  
Garage, Parking Space**

Spa: **0**

✓ Lot Features: **Corner Lot, 2-5  
Units/acre, 6-10  
Units/acre**

✓ Fence: **Brick**

✓ Security: **Automatic gate, Fire and  
smoke detection system,  
Gated community,**

Listing ID:

**OC25213475**

Card/code access,  
Carbon monoxide  
detector(s), Fire rated  
drywall, Wired for alarm  
system, Smoke  
Detector(s)



Patio:

Covered, Patio, Patio  
Open



Electric:

Electricity - On Property,  
220 Volts, Electricity - On  
Bond

Entry Level:

**1**



Laundry:

Gas & Electric Dryer  
Hookup, Upper Level



Room Type:

Living Room, Office,  
Walk-in Closet, Kitchen,  
Laundry, All Bedrooms  
Up, Entry, Media Room,  
Primary Bathroom,  
Primary Bedroom



Roofing:

Composition



Flooring:

Carpet, Laminate



Window Features:

Double Pane Windows



Entry Location:

Garage



Property Condition:

Turnkey



Foundation Details:

Slab



Interior Features:

High Ceilings, Open  
Floorplan, Pantry,  
Recessed Lighting,  
Balcony, Storage, 2  
Staircases, Home  
Automation System,  
Quartz Counters



Heating System:

Energy Star Qualified  
Equipment



Cooling System:

Central Air, Energy Star  
Qualified Equipment



Utilities:

Electricity Available,  
Sewer Connected,  
Natural Gas Connected,  
Phone Connected



Water Source:

Public

✓	Sewer:	Public Sewer
✓	Appliances:	Dishwasher, Gas Range, Tankless Water Heater, Gas Oven, Gas Cooktop, High Efficiency Water Heater
✓	Accessibility Features:	Low Pile Carpeting, 48 Inch Or More Wide Halls

## MLS Addon

Association Fee Frequency: **Monthly**

Parcel Number: **93943273**

Lot Size Square Feet: **222,156**

TaxAnnualAmount: **\$0**

Association Fee: **\$229**

✓ RoomKitchenFeatures: Kitchen Island, Pots & Pan Drawers, Quartz Counters, Kitchen Open To Family Room, Butler's Pantry, Utility Sink, Built-in Trash/recycling

✓ RoomBathroomFeatures: Shower, Bathtub, Walk-in Shower, Exhaust Fan(s), Remodeled, Upgraded, Shower In Tub, Vanity Area, Quartz Counters

Garage Spaces: **2**

High School: **Arlington**

High School 2: **Arling**

Middle Or Junior School: **Miller**

High School District: **Placentia-Yorba Linda Unified**

Levels: **Three Or More**

✓ EatingArea: Breakfast Counter / Bar, In Family Room, In Living Room

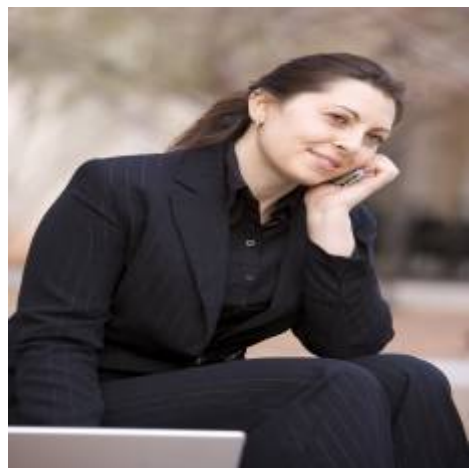
Taxes: **\$0**

Guest House SqFt:	0
Approx Lot SqFt:	0
<div>✓ Special Listing Conditions:</div>	Standard

Virtual Tour [Click Here](#)  
URL Unbranded:

Agent [Info](#)

---



Rina Maya  
☎ 858-876-7946  
☎ 800-878-0907  
✉ [Questions@unitedbrokersinc.net](mailto:Questions@unitedbrokersinc.net)

-

---