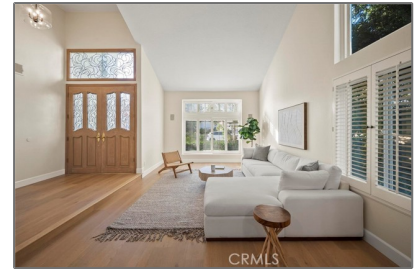


Residential For Sale

2,791 Sqft - 20516 GermainStreet, Chatsworth,
California, 91311



Basic Details

Status:	Active
Listing Type:	For Sale
Property Type:	Residential
Property SubType:	Single Family Residence
Price:	\$1,400,000
Price Per Square Foot:	\$502
Square Footage:	2,791 Sqft
Lot Area:	0.29 Sqft
Year Built:	1979
View:	Mountain(s)
Bedrooms:	4
Bathrooms:	3
Bathrooms (Full):	3
Country:	US
State:	California
County:	Los Angeles
City:	Chatsworth
Zipcode:	91311
Listing ID:	SR25215140

Features

✓ View:	Mountain(s), Neighborhood
Association:	0
Senior Community:	0
✓ Common Walls:	No Common Walls
Stories:	2
✓ Community Features:	Sidewalks, Street Lights, Curbs, Dog Park, Gutters, Biking, Storm Drains
✓ Pool:	Exercise pool, Heated, In ground, Private, Waterfall, Gas Heat
AttachedGarage :	1
✓ Parking:	2.00
✓ Parking:	Driveway, Paved, Garage - Single Door, Garage, Garage Faces Front
Spa:	1
✓ Fireplace:	Gas, Family room, Gas starter, Wood Burning
✓ Lot Features:	Back Yard, Front Yard, Cul-de-sac, Park Nearby, 0-1 Unit/acre, Sprinkler System, Landscaped,

		Irregular Lot, Sprinklers Drip System, Paved, Sprinklers On Side, Lawn, Garden, Sprinklers In Rear, Sprinklers In Front, Sprinklers Timer, Walkstreet, Treed Lot, Patio Home
✓	Fence:	Wood, Block
✓	Security:	Security lights, Smoke Detector(s)
✓	Patio:	Covered, Patio, Concrete, Cabana
Entry Level:		1
✓	Laundry:	Individual Room, Inside, Dryer Included, Washer Included
✓	Room Type:	Family Room, Formal Entry, Living Room, Loft, Office, Walk-in Closet, Laundry, Main Floor Bedroom, Entry, Foyer, Main Floor Primary Bedroom, Primary Suite, Primary Bathroom, Primary Bedroom, Two Primaries
✓	Window Features:	Double Pane Windows, Shutters
✓	Entry Location	
✓	Spa Construction:	In Ground, Private
✓	Property Condition:	Turnkey, Updated/remodeled
✓	Foundation Details:	Slab
✓	Exterior Features:	Rain Gutters
✓	Interior Features:	High Ceilings, Open Floorplan, Pantry, Recessed Lighting, Cathedral Ceiling(s), Ceiling Fan(s), Beamed Ceilings, Block Walls, Quartz Counters
Main Level Bathrooms:		1
Main Level		1

Bedrooms:		
✓	Heating System:	Central
✓	Cooling System:	Dual, Zoned, Central Air
✓	Utilities:	Sewer Connected, Water Connected, Cable Available, Electricity Connected, Natural Gas Connected, Phone Available
✓	Water Source:	Public
✓	Sewer:	Public Sewer
✓	Appliances:	Dishwasher, Double Oven, 6 Burner Stove, Gas Range, Gas Water Heater, Microwave, Refrigerator, Gas Oven, Convection Oven, Gas Cooktop, Water Line To Refrigerator, Ice Maker, High Efficiency Water Heater, Free-standing Range, Warming Drawer

MLS Addon

Zoning:	LARE11	
Parcel Number:	2707012054	
Lot Size Square Feet:	12,726	
TaxAnnualAmount:	\$0	
✓ RoomKitchenFeatures:	Pots & Pan Drawers, Quartz Counters, Remodeled Kitchen, Self-closing Cabinet Doors, Self-closing Drawers, Butler's Pantry, Utility Sink	
✓ RoomBathroomFeatures:	Shower, Bathtub, Closet In Bathroom, Separate Tub And Shower, Walk-in Shower, Exhaust Fan(s), Remodeled, Shower In Tub, Double Sinks In Bath(s), Low Flow Shower, Low Flow Toilet(s), Quartz Counters, Main Floor Full	

Bath, Double Sinks In
Primary Bath

Garage Spaces: **2**

High School: **Arlington**

High School 2: **Arling**

Middle Or Junior
School: **Miller**

High School
District: **Los Angeles Unified**

Levels: **Two**

Taxes: **\$0**

✓ OtherStructures: [Shed\(s\), Storage, Gazebo](#)

Guest House
SqFt: **0**

Approx Lot SqFt: **0**

✓ Special Listing
Conditions: [Standard](#)

Agent [Info](#)



Rina Maya

☎ 858-876-7946

☎ 800-878-0907

✉ Questions@unitedbrokersinc.net