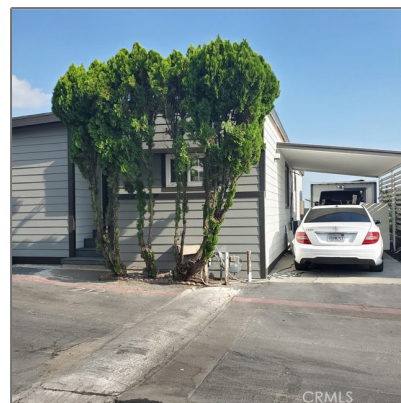


# Manufactured In Park For Sale

1,200 Sqft - 12401 Filmore Street, Sylmar, California, 91342



## Basic Details

|                        |                      |
|------------------------|----------------------|
| Status:                | Active               |
| Listing Type:          | For Sale             |
| Property Type:         | Manufactured In Park |
| Price:                 | \$260,000            |
| Price Per Square Foot: | \$217                |
| Square Footage:        | 1,200 Sqft           |
| Year Built:            | 1965                 |
| View:                  | Mountain(s)          |
| Bedrooms:              | 2                    |
| Bathrooms:             | 2                    |
| Bathrooms (Full):      | 1                    |
| Bathrooms (3/4):       | 1                    |
| Country:               | US                   |
| State:                 | California           |
| County:                | Los Angeles          |
| City:                  | Sylmar               |

## Features

|                       |   |
|-----------------------|---|
| Association:          | 0   |
| Senior Community:     | 0   |
| Stories:              | 1   |
| ✓ Pet Policy:         | Breed restrictions                              |
| ✓ Community Features: | Street Lights, Urban                            |
| ✓ Pool:               | In ground, Gunite, Community                    |
| ✓ Parking:            | 0.00  |
| ✓ Parking:            | Driveway, Covered, Deck                         |
| ✓ Lot Features:       | 2-5 Units/acre                                  |
| ✓ Inclusions:         | Gardening                                       |
| Entry Level:          | 1   |
| ✓ Laundry:            | Inside  |
| ✓ Room Type:          | All Bedrooms Down, Recreation, Primary Bathroom |
| ✓ Roofing:            | Composition                                     |

Zipcode:

91342

Listing ID:

SR25220517

|   |                    |   |
|---|--------------------|---|
| ✓ | Window Features:   | Double Pane Windows   |
| ✓ | Entry Location:    | Front Door/garage/street Level  |
| ✓ | Exterior Features: | Awning(s)   |
| ✓ | Heating System:    | See remarks   |
| ✓ | Cooling System:    | See remarks   |
| ✓ | Utilities:         | Sewer Connected, Water Connected, Electricity Connected, Natural Gas Connected, Cable Connected |
| ✓ | Water Source:      | Public  |
| ✓ | Sewer:             | Public Sewer  |
| ✓ | Appliances:        | Gas Water Heater, Water Heater  |

## MLS Addon

|   |  |
|---|--|
| Parcel Number:  | 2526023042                             |
| TaxAnnualAmount:  | \$0                                    |
| <div><div>✓</div><div>RoomBathroomFeatures:</div></div> | Bathtub, Shower In Tub, Stone Counters |
| High School:  | Arlington                              |
| High School 2:  | Arling                                 |
| Middle Or Junior School:                                | Miller                                 |
| High School District:                                   | Los Angeles Unified                    |
| Levels:   | One                                    |
| <div><div>✓</div><div>EatingArea:</div></div>           | Dining Room, Breakfast Counter / Bar   |
| Taxes:  | \$0                                    |
| Guest House SqFt:                                       | 0 Sqft                                 |
| Approx Lot SqFt:  | 0 Sqft                                 |



Special Listing  
Conditions:

Standard

## Agent [Info](#)

---



Rina Maya

📞 858-876-7946

📞 800-878-0907

✉️ [Questions@unitedbrokersinc.net](mailto:Questions@unitedbrokersinc.net)

---