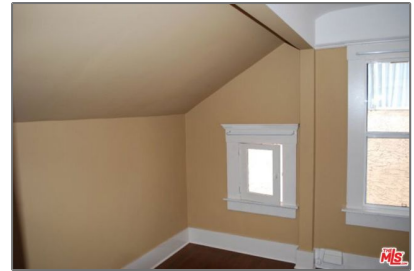
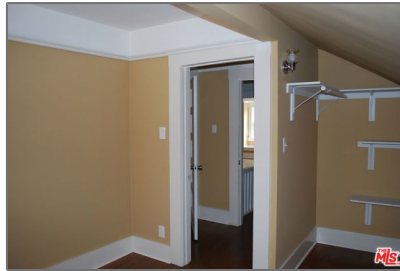


Residential Rent For Rent

4,016 Sqft - 1460 28thStreet, Los Angeles,
California, 90007



Basic Details

Status: **Active**

Listing Type: **For Rent**

Property Type: **Residential Rent**

Property SubType: **Condominium**

Price: **\$7,900**

Price Per Square Foot: **\$2**

Square Footage: **4,016 Sqft**

Lot Area: **0.17 Sqft**

Year Built: **1906**

View: **Mountain(s)**

Bedrooms: **6**

Bathrooms: **4**

Bathrooms (Full): **4**

Country: **US**

State: **California**

County: **Los Angeles**

City: **Los Angeles**

Zipcode: **90007**

Listing ID: **25596305**

Features

✓ View: **City Lights**

Association: **0**

Senior Community: **0**

Stories: **2**

✓ Parking

✓ Parking: **Parking Space**

✓ Furnished: **Unfurnished**

✓ Laundry: **Dryer Included, Washer Included**

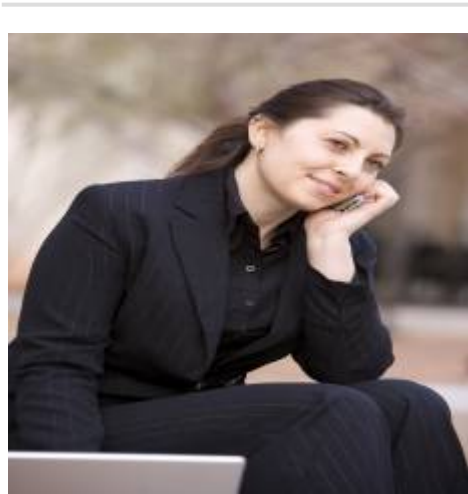
✓ Flooring: **Wood**

✓ Appliances: **Dishwasher, Microwave**


MLS [Addon](#)


Zoning:	LAR2
Parcel Number:	5054033005
Lot Size Square Feet:	7,427
Lot Size Dimensions:	55x135
TaxAnnualAmount:	\$0
High School:	Arlington
High School 2:	Arling
Middle Or Junior School:	Miller
Levels:	One
Lease Term :	12 Months
Taxes:	\$0
Guest House SqFt:	0
Approx Lot SqFt:	0


Agent [Info](#)



Rina Maya

 858-876-7946

 800-878-0907

 Questions@unitedbrokersinc.net