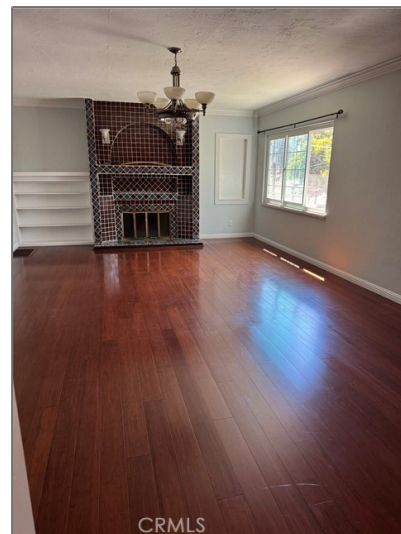


Residential Rent For Rent

2,200 Sqft - 1300 BenedictDrive, San Leandro,
California, 94577



Basic Details

Status:	Active
Listing Type:	For Rent
Property Type:	Residential Rent
Property SubType:	Duplex
Price:	\$4,500
Price Per Square Foot:	\$2
Square Footage:	2,200 Sqft
Lot Area:	0.16 Sqft
Year Built:	1939
View:	Mountain(s)
Bedrooms:	3
Bathrooms:	4
Bathrooms (Full):	3
Bathrooms (1/2):	1
Country:	US

Features

Association:	0
Senior Community:	0
✓ Common Walls:	No Common Walls
Stories:	1
✓ Community Features:	Urban
AttachedGarage :	1
✓ Parking	
✓ Parking:	Direct Garage Access, Garage - Single Door, Garage Door Opener, Garage, Garage Faces Front
Spa:	0
✓ Lot Features:	0-1 Unit/acre
✓ Furnished:	Unfurnished
Entry Level:	1
✓ Laundry:	Dryer Included, Washer

State:	California		Included
County:	Alameda	✓ Room Type:	Kitchen, Laundry, All Bedrooms Down
City:	San Leandro	✓ Entry Location:	Second Level
Zipcode:	94577		
Listing ID:	AR25229200	Main Level Bathrooms:	2
		Main Level Bedrooms:	3
		✓ Utilities:	Sewer Connected, Water Connected, Electricity Connected, Natural Gas Connected
		✓ Water Source:	Public
		✓ Sewer:	Public Sewer

MLS [Addon](#)

Zoning:	R1
Parcel Number:	0770621017
Lot Size Square Feet:	6,970
TaxAnnualAmount:	\$0
Garage Spaces:	1
High School:	Arlington
High School 2:	Arling
Middle Or Junior School:	Miller
High School District:	San Leandro
Levels:	One
Lease Term :	12 Months,24 Months
Taxes:	\$0
Guest House SqFt:	0
Approx Lot SqFt:	0



Special Listing
Conditions:

Standard

Agent [Info](#)



Rina Maya

☎ 858-876-7946

☎ 800-878-0907

✉ Questions@unitedbrokersinc.net
