

# Residential For Sale

1,066 Sqft - 4140 Workman MillRoad, Whittier,  
California, 90601



## Basic [Details](#)

Status:	<b>Active</b>
Listing Type:	<b>For Sale</b>
Property Type:	<b>Residential</b>
Property SubType:	<b>Condominium</b>
Price:	<b>\$495,000</b>
Price Per Square Foot:	<b>\$464</b>
Square Footage:	<b>1,066 Sqft</b>
Year Built:	<b>1980</b>
View:	<b>Mountain(s)</b>
Bedrooms:	<b>2</b>
Bathrooms:	<b>1</b>
Bathrooms (Full):	<b>1</b>
Country:	<b>US</b>
State:	<b>California</b>
County:	<b>Los Angeles</b>
City:	<b>Whittier</b>
Zipcode:	<b>90601</b>
Listing ID:	<b>DW25152735</b>

## Features

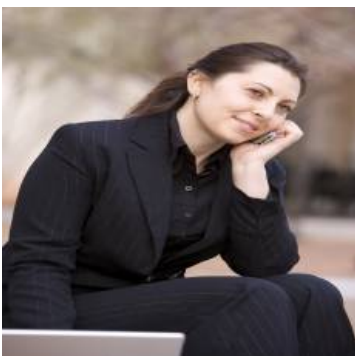
✓ View:	<a href="#">Hills</a>
Association:	<b>1</b>
Senior Community:	<b>0</b>
✓ Common Walls:	<a href="#">2+ Common Walls</a>
Stories:	<b>1</b>
✓ Community Features:	<a href="#">Sidewalks, Street Lights</a>
✓ Pool:	<a href="#">Community</a>
✓ Amenities:	<a href="#">Pool, Spa/hot Tub, Sauna, Pickleball</a>
✓ Parking:	<a href="#">0.00</a>
✓ Fireplace:	<a href="#">See remarks</a>
Entry Level:	<b>1</b>
✓ Laundry:	<a href="#">See Remarks</a>
✓ Room Type:	<a href="#">Living Room, Kitchen</a>
✓ Entry Location:	<a href="#">Front</a>
Main Level Bathrooms:	<b>1</b>
Main Level Bedrooms:	<b>2</b>

✓	Heating System:	Central
✓	Cooling System:	Central Air
✓	Water Source:	Public
✓	Sewer:	Public Sewer

## MLS [Addon](#)

Association Fee Frequency:	<b>Monthly</b>
Parcel Number:	<b>8125054030</b>
Tax Annual Amount:	<b>\$0</b>
Association Fee:	<b>\$538</b>
High School:	<b>Arlington</b>
High School 2:	<b>Arling</b>
Middle Or Junior School:	<b>Miller</b>
High School District:	<b>Whittier Union High</b>
Levels:	<b>One</b>
Lease Term :	<b>12 Months</b>
Taxes:	<b>\$0</b>
Guest House SqFt:	<b>0 Sqft</b>
Approx Lot SqFt:	<b>0 Sqft</b>
✓ Special Listing Conditions:	<b>Standard</b>

## Agent [Info](#)



Rina Maya  
 ☎ 858-876-7946  
 ☎ 800-878-0907  
 ✉ [Questions@unitedbrokersinc.net](mailto:Questions@unitedbrokersinc.net)

