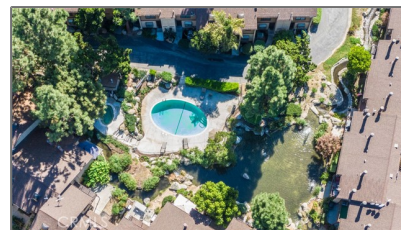
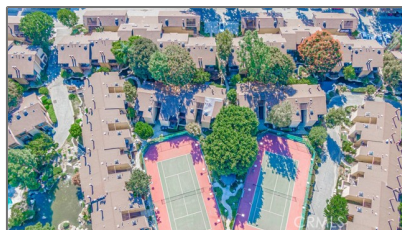


Residential For Sale

1,228 Sqft - 4140 Workman MillRoad, Whittier,
California, 90601



Basic Details

Status: **Active**

Listing Type: **For Sale**

Property Type: **Residential**

Property SubType: **Condominium**

Price: **\$550,000**

Price Per Square Foot: **\$448**

Square Footage: **1,228 Sqft**

Lot Area: **7.36 Sqft**

Year Built: **1980**

View: **Mountain(s)**

Bedrooms: **2**

Bathrooms: **2**

Bathrooms (Full): **2**

Country: **US**

State: **California**

County: **Los Angeles**

City: **Whittier**

Zipcode: **90601**

Listing ID: **DW25152742**

Features

✓ View: **Hills**

Association: **1**

Senior Community: **0**

✓ Common Walls: **2+ Common Walls**

Stories: **2**

✓ Community Features: **Sidewalks, Street Lights, Curbs**

✓ Pool: **Community**

✓ Amenities: **Pool, Spa/hot Tub, Sauna, Pickleball**

AttachedGarage : **0**

✓ Parking: **2.00**

✓ Fireplace: **See remarks**

Entry Level: **1**

✓ Laundry: **See Remarks**

✓ Room Type: **Living Room, Kitchen, Entry**

✓ Entry Location: **Front Door**

Main Level **2**

Bathrooms:		
Main Level		
Bedrooms:		2
✓	Heating System:	Central
✓	Cooling System:	Central Air
✓	Water Source:	Public
✓	Sewer:	Public Sewer

MLS [Addon](#)

Association Fee Frequency:	Monthly
Parcel Number:	8125055108
Lot Size Square Feet:	320,514 Sqft
TaxAnnualAmount:	\$0
Association Fee:	\$538
Garage Spaces:	2
High School:	Arlington
High School 2:	Arling
Middle Or Junior School:	Miller
High School District:	Whittier Union High
Levels:	Two
Taxes:	\$0
Guest House SqFt:	0 Sqft
Approx Lot SqFt:	0 Sqft
✓ Special Listing Conditions:	Standard

Agent [Info](#)



Rina Maya

☎ 858-876-7946

☎ 800-878-0907

✉ Questions@unitedbrokersinc.net
