

# Residential For Sale

1,208 Sqft - 7241 Woodrow Wilson Drive, Los Angeles, California, 90068



## Basic Details

Status:	Active
Listing Type:	For Sale
Property Type:	Residential
Property SubType:	Single Family Residence
Price:	\$1,375,000
Price Per Square Foot:	\$1,138
Square Footage:	1,208 Sqft
Lot Area:	0.33 Sqft
Year Built:	1949
View:	Mountain(s)
Bedrooms:	2
Bathrooms:	2
Bathrooms (Full):	2
Country:	US
State:	California
County:	Los Angeles
City:	Los Angeles
Zipcode:	90068

## Features

✓ View:	City Lights, Mountain(s), Neighborhood, Panoramic, Canyon, Park/greenbelt, See Remarks, Pool
Association:	0
Senior Community:	0
✓ Common Walls:	No Common Walls
Stories:	1
✓ Community Features:	Mountainous, Foothills
✓ Pool:	Heated, In ground, Private
Attached Garage :	0
✓ Parking	
✓ Parking:	Gated, Paved, Garage - Single Door, Garage Door Opener, Garage, Private, Garage Faces Front
Spa:	0
✓ Lot Features:	Back Yard, Front Yard, 0-1 Unit/acre, Lot 10000-19999 Sqft, Yard, Value In Land, Garden, Bluff, Sloped Down

Listing ID:	OC25181693	
✓	Fence:	Wood, Privacy, Glass, Security
✓	Patio:	Deck, Wood, Rear Porch
✓	Electric:	Standard, 220 Volts In Laundry
✓	Inclusions:	All Appliances.
Entry Level:		1
✓	Laundry:	In Kitchen
✓	Room Type:	Family Room, Office, Kitchen, Main Floor Bedroom, All Bedrooms Down, Entry, Main Floor Primary Bedroom, Primary Suite, Primary Bathroom, Primary Bedroom
✓	Roofing:	Shingle
✓	Flooring:	Wood
✓	Window Features:	Screens
✓	Entry Location:	South Facing, Up Flight Of Stairs
✓	Property Condition:	Updated/remodeled, Fixer, Repairs Cosmetic, Building Permit
✓	Foundation Details:	Slab
✓	Interior Features:	Built-in Features, Open Floorplan, Unfurnished, Phone System, Quartz Counters
Main Level Bathrooms:		1
Main Level Bedrooms:		1
✓	Heating System:	Central
✓	Cooling System:	Central Air
✓	Utilities:	Electricity Available, Natural Gas Available, Sewer Connected, Water Available, Water Connected, Cable

		Available, Natural Gas Connected, Phone Available, Phone Connected, Cable Connected, Sewer Available
✓	Water Source:	Public
✓	Sewer:	Public Sewer
✓	Appliances:	Dishwasher, Double Oven, Gas Range, Gas Water Heater, Microwave, Refrigerator, Gas Oven, Range Hood, Ice Maker, Freezer

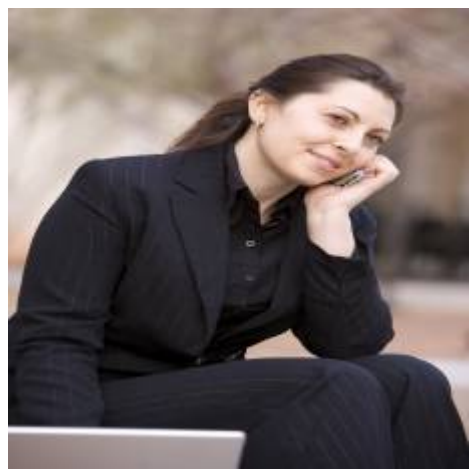
### MLS Addon

Zoning:	LAR1
Parcel Number:	2429004015
Lot Size Square Feet:	14,374.80 Sqft
✓ Exclusions:	Personal Property.
TaxAnnualAmount:	\$0
✓ RoomKitchenFeatures:	Kitchen Island, Quartz Counters, Remodeled Kitchen, Kitchen Open To Family Room, Stone Counters
✓ RoomBathroomFeatures:	Shower, Bathtub, Walk-in Shower, Exhaust Fan(s), Remodeled, Upgraded, Vanity Area, Quartz Counters
Garage Spaces:	1
High School:	Hollywood
High School 2:	Hollyw
Middle Or Junior School:	Miller
Elementary School:	Valley View
High School District:	Los Angeles Unified

Levels:	One
<div>✓</div> EatingArea:	In Family Room
Taxes:	\$0
Guest House SqFt:	0 Sqft
Approx Lot SqFt:	0 Sqft
<div>✓</div> Special Listing Conditions:	Standard

Agent [Info](#)

---



Rina Maya  
☎ 858-876-7946  
☎ 800-878-0907  
✉ [Questions@unitedbrokersinc.net](mailto:Questions@unitedbrokersinc.net)

-

---