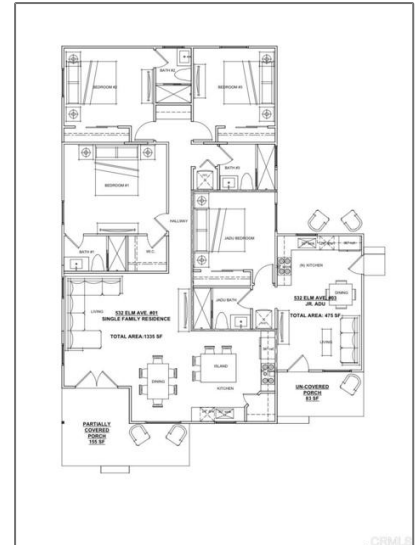


Residential For Sale

2,779 Sqft - 532 Elm, Imperial Beach, California, 91932



Basic Details

Status: **Active**

Listing Type: **For Sale**

Property Type: **Residential**

Property SubType: **Single Family Residence**

Price: **\$1,525,000**

Price Per Square Foot: **\$549**

Square Footage: **2,779 Sqft**

Lot Area: **0.16 Sqft**

Year Built: **2025**

View: **Mountain(s)**

Bedrooms: **7**

Bathrooms: **6**

Bathrooms (Full): **6**

Country: **US**

Features

Association: **0**

Senior Community: **0**

✓ Common Walls: **1 Common Wall**

Stories: **1**

✓ Community Features: **Sidewalks, Street Lights, Hiking, Curbs, Preserve/public Land, Dog Park, Gutters, Storm Drains**

✓ Parking: **0.00**

Spa: **0**

✓ Lot Features: **Back Yard, Front Yard**

✓ Fence: **Wood, Excellent condition**

Entry Level: **1**

✓ Laundry: **Inside, Dryer Included, Washer Included**

✓ Room Type: **All Bedrooms Down**

State:	California
County:	San Diego
City:	Imperial Beach
Zipcode:	91932
Listing ID:	PTP2507489

✓	Entry Location:	Front
✓	Heating System:	Ductless
✓	Cooling System:	Zoned
✓	Sewer:	Public Sewer

MLS [Addon](#)

Zoning:	R-1
Parcel Number:	6253132500
Lot Size Square Feet:	6,807.90 Sqft
TaxAnnualAmount:	\$0
High School:	Arlington
High School 2:	Arling
Middle Or Junior School:	Miller
High School District:	South Bay Union
Levels:	One
Taxes:	\$0
Guest House SqFt:	0 Sqft
Approx Lot SqFt:	0 Sqft
✓ Special Listing Conditions:	Standard
Virtual Tour URL Unbranded:	Click Here

Agent [Info](#)



Rina Maya

☎ 858-876-7946

☎ 800-878-0907

✉ Questions@unitedbrokersinc.net
