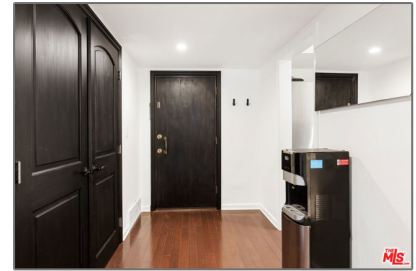


# Residential For Sale

1,293 Sqft - 6708 HillparkDrive, Los Angeles,  
California, 90068



## Basic Details

Status:	Active
Listing Type:	For Sale
Property Type:	Residential
Property SubType:	Condominium
Price:	\$707,000
Price Per Square Foot:	\$547
Square Footage:	1,293 Sqft
Lot Area:	11.70 Sqft
Year Built:	1966
View:	Mountain(s)
Bedrooms:	2
Bathrooms:	2
Bathrooms (Full):	2
Country:	US
State:	California
County:	Los Angeles
City:	Los Angeles
Zipcode:	90068
Listing ID:	25600465

## Features

✓ View:	Courtyard
Association:	1
Senior Community:	0
✓ Common Walls:	1 Common Wall
Stories:	0
✓ Pool:	Association
✓ Amenities:	Pool, Spa/hot Tub, Tennis Court(s), Sport Court, Sauna, Recreation Room, Trash, Water
✓ Parking:	2.00
✓ Parking:	Gated, Guest, Assigned, Community Structure
Spa:	1
✓ Security:	Automatic gate, Card/code access
Entry Level:	3
✓ Laundry:	Community
✓ Room Type:	Living Room
✓ Flooring:	Wood, Carpet
✓ Spa Construction:	

Association
Heating System:
Central
Cooling System:
Central Air
Appliances:
Dishwasher, Microwave



Heating System:



Cooling System:



Appliances:

## MLS [Addon](#)

Association Fee Frequency:	Monthly
Zoning:	LARE15
Parcel Number:	5549004058
Lot Size Square Feet:	509,619 Sqft
TaxAnnualAmount:	\$0
Association Fee:	\$1,036
Garage Spaces:	2
High School:	Arlington
High School 2:	Arling
Middle Or Junior School:	Miller
Levels:	One
Taxes:	\$0
Guest House SqFt:	0 Sqft
Approx Lot SqFt:	0 Sqft
Special Listing Conditions:	Standard

## Agent [Info](#)



Rina Maya

☎ 858-876-7946

☎ 800-878-0907

✉ [Questions@unitedbrokersinc.net](mailto:Questions@unitedbrokersinc.net)

---