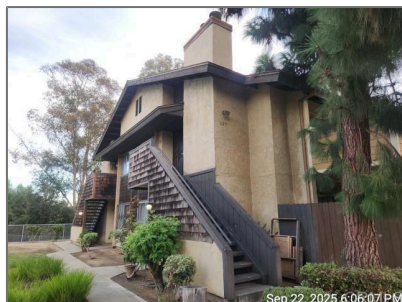


# Residential For Sale

1,099 Sqft - 625 R Ave, National City, California,  
91950



## Basic Details

Status: **Active**

Listing Type: **For Sale**

Property Type: **Residential**

Property SubType: **Condominium**

Price: **\$440,000**

Price Per Square Foot: **\$400**

Square Footage: **1,099 Sqft**

Lot Area: **2.66 Sqft**

Year Built: **1980**

View: **Mountain(s)**

Bedrooms: **2**

Bathrooms: **2**

Bathrooms (Full): **2**

Country: **US**

State: **California**

County: **San Diego**

City: **National City**

Zipcode: **91950**

## Features

✓ View: **Neighborhood**

Association: **1**

Senior Community: **0**

✓ Common Walls: **2+ Common Walls, End Unit**

Stories: **1**

✓ Community Features: **Urban**

✓ Amenities: **Maintenance Grounds, Trash**

✓ Parking

✓ Parking: **Assigned**

Spa: **0**

✓ Fireplace: **Living room**

Entry Level: **2**

✓ Laundry: **Inside, In Closet**

✓ Room Type: **Living Room, Kitchen, Primary Bathroom, Primary Bedroom**

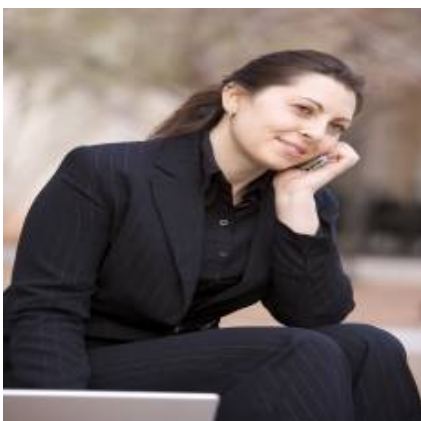
✓ Sewer: **Public Sewer**

Listing ID:	<b>PTP2507523</b>
-------------	-------------------

## MLS [Addon](#)

Association Fee Frequency:	<b>Monthly</b>
Zoning:	<b>1</b>
Parcel Number:	<b>5570504628</b>
Lot Size Square Feet:	<b>115,869.60 Sqft</b>
TaxAnnualAmount:	<b>\$0</b>
Association Fee:	<b>\$280</b>
High School:	<b>Arlington</b>
High School 2:	<b>Arling</b>
Middle Or Junior School:	<b>Miller</b>
High School District:	<b>Sweetwater Union</b>
Levels:	<b>One</b>
Lease Term :	<b>12 Months</b>
Taxes:	<b>\$0</b>
Guest House SqFt:	<b>0 Sqft</b>
Approx Lot SqFt:	<b>0 Sqft</b>
<div>✓</div> Special Listing Conditions:	<b>Hud Owned</b>

## Agent [Info](#)



Rina Maya

☎ 858-876-7946

☎ 800-878-0907

✉ [Questions@unitedbrokersinc.net](mailto:Questions@unitedbrokersinc.net)

